

HOLLY HUNT GREAT PLAINS

FABRIC NUMBER AND NAME

4901 / CHARMING

DESCRIPTION

A new double width wool article, CHARMING has a soft slinky hand and features a traditional herringbone pattern. This handsome quality can be used both lined and unlined and the five neutral colorways would be well-suited for a variety of settings.

CONTENT

100% Wool

WIDTH

122" (310 cm)

COLORS AVAILABLE

- 01 Soft Light
- 02 Golden Grey
- 04 Valley Fog
- 05 Earl Grey

TESTING INFORMATION

- FR treat to pass NFPA 701
- FR treat to pass BS 5867-2 Type B

WEIGHT

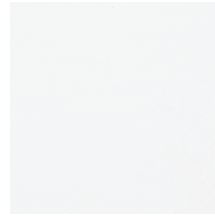
Window

FREIGHT CODE

DW

CLEANING & CARE

- Dry clean only.
- For optimal textile performance, maintain fabrics by gently vacuuming dirt before it becomes embedded, wipe or blot spills as soon as they occur, and spot clean soon after stains occur. When spot cleaning, always test a small, inconspicuous part of the furniture in case of discoloration or shrinkage. Avoid excessive brushing that may abrade the fibers.
- As necessary, steaming may be done from back of fabric in downward strokes. Always test a small corner of the fabric first. Keep a few inches of distance between the steamer and the fabric, and do not steam in one place of a fabric for too long.



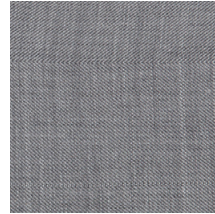
01 SOFT LIGHT



02 GOLDEN GREY



04 VALLEY FOG



05 EARL GREY

