

HOLLY HUNT GREAT PLAINS

FABRIC NUMBER AND NAME

4010 / GREYSTONE BASKETWEAVE

DESCRIPTION

This new linen inspired midweight offers the rose quartz and serenity colors of this launch in a nuanced and ethereal greystone weave. Woven in Belgium at one of the best linen mills, we were able to achieve these subtle tones because of a special grey linen warp we developed with them. This textile is refined yet soft enough for casual spaces. Use as is, for bedding or knit back for upholstery.

CONTENT

45% Linen 45% Rayon 10% Polyamide

WIDTH

50" (127 cm)

COLORS AVAILABLE

- 01 Misted
- 02 Blue Grey
- 03 Nordic
- 04 First Blush
- 05 Dream

TESTING INFORMATION

- Passes 100,000 Wyzenbeek Double Rubs
Recommended for light residential use
- FR Back to Pass CAL 117 (2013)
- Passes BS 5852 Source 0 with FR rated foam

WEIGHT

Upholstery

FREIGHT CODE

D

CLEANING & CARE

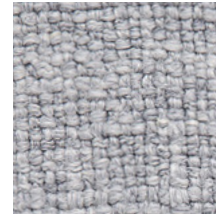
- Gentle, professional dry cleaning with any solvent except trichloroethylene is recommended.
- For optimal textile performance, maintain fabrics by gently vacuuming dirt before it becomes embedded, wipe or blot spills as soon as they occur, and spot clean soon after stains occur. When spot cleaning, always test a small, inconspicuous part of the furniture in case of discoloration or shrinkage. Avoid excessive brushing that may abrade the fibers.

BACKING RECOMMENDATION

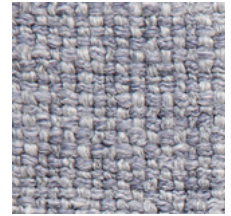
- Knit backing is recommended for use on HOLLY HUNT upholstered product. For all other upholstery, please consult your workroom.



01 MISTED



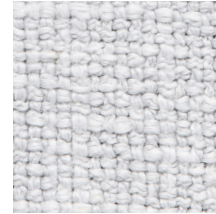
02 BLUE GREY



03 NORDIC



04 FIRST BLUSH



05 DREAM

