

HOLLY HUNT GREAT PLAINS

FABRIC NUMBER AND NAME

4503 / PYTHON VELVET

DESCRIPTION

S-s-s-s-so gorgeous...PYTHON VELVET is a 100% silk velvet quality with a subtle snakeskin pattern. Inspired by a luxury handbag, this jacquard's scale lends itself to any application. Offered in colors that are both warm and cool, PYTHON can tie together any transitional scheme!



01 NATURAL

CONTENT

Pile: 100% Silk

Ground: 62% Silk 26% Polyester 12% Cotton

WIDTH

49" (125 cm)

REPEAT

39" Vertical 24-3/4" Horizontal

(99 cm Vertical 63 cm Horizontal)

COLORS AVAILABLE

- 01 Natural

TESTING INFORMATION

- Passes 40,000 Wyzenbeek Double Rubs
- Passes CAL 117
- Passes NFPA 260
- Passes BS 5852 Source 0 & 1 with FR rated foam

WEIGHT

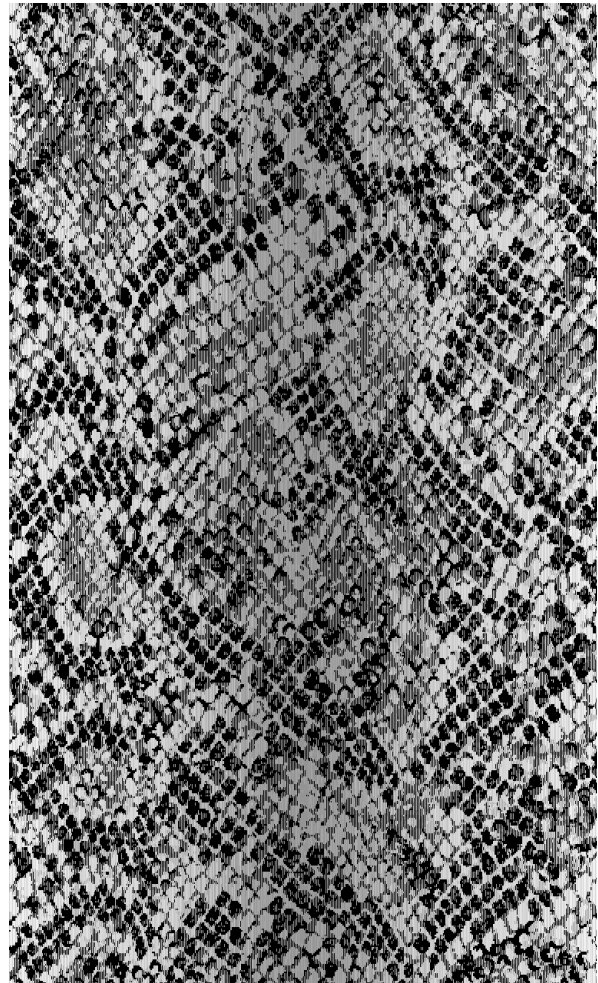
Upholstery

FREIGHT CODE

D

CLEANING & CARE

- Professional dry cleaning is recommended.
- For optimal textile performance, maintain fabrics by gently vacuuming dirt before it becomes embedded, wipe or blot spills as soon as they occur, and spot clean soon after stains occur. When spot cleaning, always test a small, inconspicuous part of the furniture in case of discoloration or shrinkage. Avoid excessive brushing that may abrade the fibers.



FULL REPEAT

