

HOLLY HUNT GREAT PLAINS

FABRIC NUMBER AND NAME

3292 / STUART

DESCRIPTION

STUART's two-toned basket weave features 32% cashmere, personifying handcrafted luxury! Offered in a range of classic cashmere neutrals, STUART is bound to add softness and warmth to any application.

CONTENT

68% Wool 32% Cashmere

WIDTH

52" (132 cm)

COLORS AVAILABLE

- 01 Winter White
- 02 Frost
- 03 Buff
- 04 Chocolate Velvet
- 05 Dove grey

TESTING INFORMATION

- Passes 20,000 Wyzenbeek Double Rubs
- Passes CAL 117
- Passes NFPA 260
- Passes BS 5852 Source 0 & 1 with FR rated foam

WEIGHT

Multi-use

FREIGHT CODE

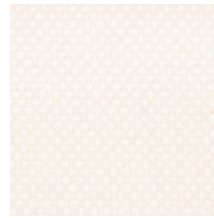
C

CLEANING & CARE

- Professional dry cleaning recommended.
- For optimal textile performance, maintain fabrics by gently vacuuming dirt before it becomes embedded, wipe or blot spills as soon as they occur, and spot clean soon after stains occur. When spot cleaning, always test a small, inconspicuous part of the furniture in case of furniture discoloration or shrinkage. Avoid excessive brushing that may abrade the fibers.

BACKING RECOMMENDATION

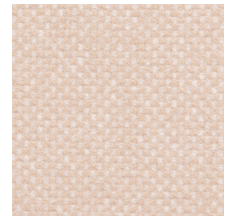
Knit backing is recommended for use on HOLLY HUNT upholstered product. For all other upholstery, please consult your workroom.



01 WINTER WHITE



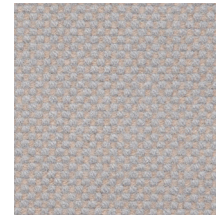
02 FROST



03 BUFF



04 CHOCOLATE
VELVET



05 DOVE GREY

