

# HOLLY HUNT GREAT PLAINS

---

## FABRIC NUMBER AND NAME

3236 / WEeping WILLOW

## DESCRIPTION

Introducing a new sheer quality to our Great Plains collection, WEeping WILLOW comes in five neutral color tones that epitomize the color story this Fall. Multitoned warp and weft yarns, give this pattern a heathered look which softly filters light through the textile. A beautiful pattern for draperies, the soft hand comes from wool, silk and linen blend. Weeping Willow can be used unlined or lined and we look forward to seeing it schemed with other Great Plains qualities!

## CONTENT

40% Wool, 35% Silk, 25% Linen

## WIDTH

58" (147 cm)

## COLORS AVAILABLE

- 01 Peat Heather
- 02 Valley Fog
- 03 Huntsman
- 04 Lagoon
- 05 Abyss

## WEIGHT

Window

## FREIGHT CODE

A

## CLEANING & CARE

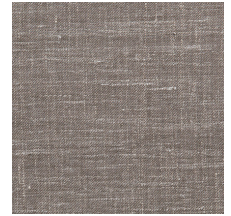
- Dry clean only.
- For optimal textile performance, maintain fabrics by gently vacuuming dirt before it becomes embedded, wipe or blot spills as soon as they occur, and spot clean soon after stains occur. When spot cleaning, always test a small, inconspicuous part of the furniture in case of discoloration or shrinkage. Avoid excessive brushing that may abrade the fibers.



01 PEAT HEATHER



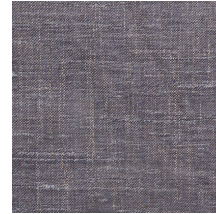
02 VALLEY FOG



03 HUNTSMAN



04 LAGOON



05 ABYSS

