

FABRIC NUMBER AND NAME

281 / MOSAIC

DESCRIPTION

Translated from a watercolor painting done by our in-house design team, MOSAIC is a new pattern inspired by Grecian mosaics. Pair with our new Mosaic Tape trim for a unique pattern-play look!

CONTENT

100% Solution Dyed Sunbrella® Yarns

WIDTH

52" (132 cm)

REPEAT

30" Vertical 26" Horizontal
(76 cm Vertical 66 cm Horizontal)

COLORS AVAILABLE

- 01 Bedrock
- 02 Greek Islands

TESTING INFORMATION

- Passes 12,000 Wyzenbeek Double Rubs
- Passes CAL 117
- Passes NFPA 260

WEIGHT

Upholstery

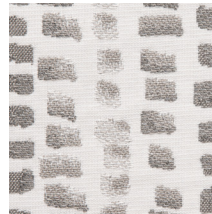
FREIGHT CODE

C

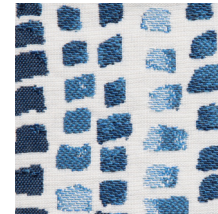
CLEANING & CARE

- Do not Dry Clean
- 100% Solution Dyed fibers are kidproof, dyed-through, easy to clean and don't fade!
- Maintain fabrics by brushing off dirt before it becomes embedded, wipe up spills as soon as they occur or spot clean soon after stains occur.
- Spot clean only with a soft sponge or cloth. Do not use a brush as it may abrade the fibers. The delicate weave and fine denure of the yarns can break when cleaned with rough bristles.

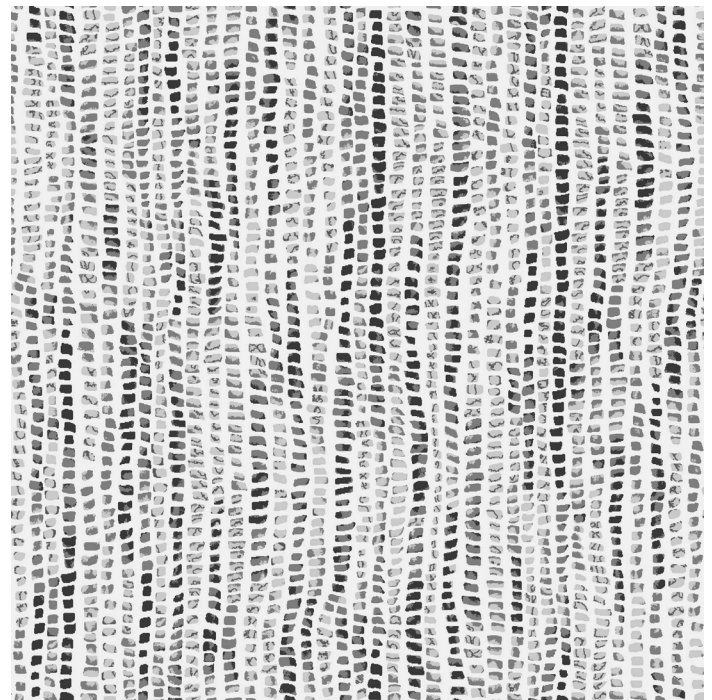
Extensive cleaning instructions available at www.hollyhunt.com.



01 BEDROCK



02 GREEK ISLANDS



FULL REPEAT

