

FABRIC NUMBER AND NAME

239 / PALM

DESCRIPTION

Inspired by a Brazilian sarong, Holly designed this bold tropical palm featuring unique yarn twists and an intricate jacquard weave. Palm is great for accent pieces or pillows and is easily paired with other Great Outdoors basics.

CONTENT

100% Solution Dyed Sunbrella® Yarns

WIDTH

54" (137 cm)

REPEAT

29" Vertical 27-3/8" Horizontal
(74 cm Vertical 69 cm Horizontal)

FINISH

Stocked with a stain repellent finish

COLORS AVAILABLE

- 01 Green Leaf
- 02 Bali Breeze
- 03 Amazon
- 04 Mediterranean

PERFORMANCE CHARACTERISTICS

- Fade-resistant to sunlight
- Chlorine resistant
- Bleach cleanable
- For use indoors or out

TESTING INFORMATION

- Passes 24,000 Wyzenbeek Double Rubs
- Passes CAL 117
- Passes NFPA 260

WEIGHT

Upholstery

FREIGHT CODE

C

CLEANING & CARE

- 100% Solution Dyed fibers are kidproof, dyed-through, easy to clean and don't fade!
- Maintain fabrics by brushing off dirt before it becomes embedded, wipe up spills as soon as they occur or spot clean soon after stains occur.

(cleaning and care, continued...)

- Spot clean only with a soft sponge or cloth. Do not use a brush as it may abrade the fibers. The delicate weave and fine denure of the yarns can break when cleaned with rough bristles.
- If upholstered, be certain to remove all water or bleach after cleaning. A wet/dry extractor is recommended to thoroughly flush the affected area and remove all moisture.

Extensive cleaning instructions available at www.hollyhunt.com.



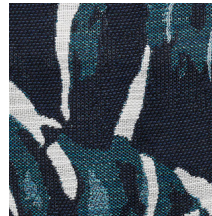
01 GREEN LEAF



02 BALI BREEZE



03 AMAZON



04 MEDITERRANEAN



FULL REPEAT

