

HOLLY HUNT GREAT PLAINS

FABRIC NUMBER AND NAME

2650 / NEW SIDE

DESCRIPTION

A refresh to the wool sateen category meet NEW SIDE, a sister to Two Sides offered in eight classic neutrals. Ideal for use as draperies, this textile falls beautifully which showcases the subtle luster. A perfect sub if needed for Two Sides or Bright Side.

CONTENT

100% Wool

WIDTH

55" (140 cm)

COLORS AVAILABLE

- | | | |
|------------------|-------------------|--------------------|
| • 01 Marble | • 09 Frost | • 17 Light Natural |
| • 02 Dream | • 10 New Camel | • 18 Silvered |
| • 03 Warm Silver | • 11 Going Grey | • 19 Putty |
| • 04 Hunt | • 12 Silver Blue | • 20 Silver Brown |
| • 05 Sierra | • 13 Mocha | • 21 Graphite |
| • 06 New Blue | • 14 Heirloom | |
| • 07 Indigo | • 15 True Navy | |
| • 08 Cream | • 16 Winter White | |

TESTING INFORMATION

- Passes 31,000 Wyzenbeek Double Rubs
- Passes CAL 117
- Passes NFPA 260
- FR treat to pass BS 5867-2 Type B
- Passes BS 5852 Source 0, 1, & CRIB 5 with FR rated foam
- Passes NFPA 701 with FR Treatment

WEIGHT

Midweight

FREIGHT CODE

B

CLEANING & CARE

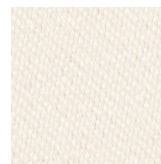
- Maintain fabrics by brushing off dirt before it becomes embedded, wipe up spills as soon as they occur or spot clean soon after stains occur.
- Spot clean only with a soft sponge or cloth. Do not use a brush as it may abrade the fibers. The delicate weave and fine denure of the yarns can break when cleaned with rough bristles.
- For optimal textile performance, maintain fabrics by gently vacuuming dirt before it becomes embedded, wipe or blot spills as soon as they occur, and spot clean soon after

stains occur. When spot cleaning, always test a small, *(cleaning and care, continued...)*

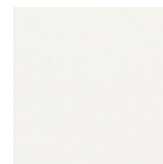
inconspicuous part of the furniture in case of discoloration or shrinkage. Avoid excessive brushing that may abrade the fibers.

BACKING RECOMMENDATION

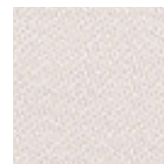
- Knit backing is recommended for use on HOLLY HUNT upholstered product. For all other upholstery, please consult your workroom.



16 WINTER WHITE



08 CREAM



09 FROST



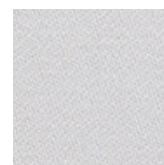
01 MARBLE



17 LIGHT NATURAL



18 SILVERED



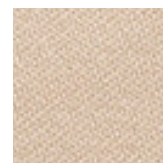
02 DREAM



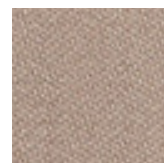
03 WARM SILVER



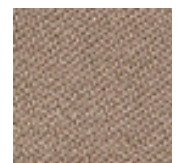
19 PUTTY



10 NEW CAMEL



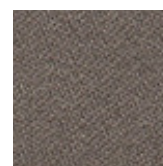
11 GOING GREY



13 MOCHA



20 SILVER BROWN



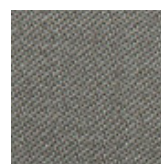
05 SIERRA



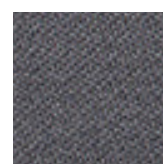
12 SILVER BLUE



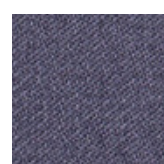
21 GRAPHITE



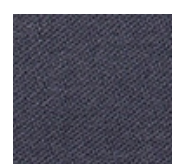
04 HUNT



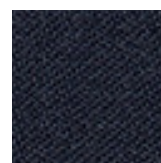
14 HEIRLOOM



06 NEW BLUE



07 INDIGO



15 TRUE NAVY

