



CARLISLE & CO.<sup>®</sup>

WALLCOVERINGS

— EST. 1998 —



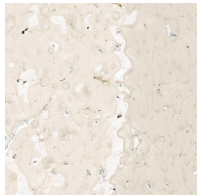
SIGNATURE PRINTS

UNCORKED

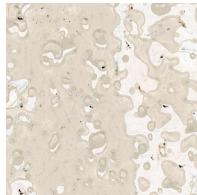
LX1243 CHAMPAGNE

WIDTH:	27" (68,5 cm) Trimmed
REPEAT:	25¼" (64,14 cm)
BACKING:	Non-Woven
FLAME RATING:	ASTM E84 Class A
BOLT SIZE:	9 yd (8,23 m)
MATCH:	Straight
MINIMUM ORDER:	9 yd (8,23 m)
MAINTENANCE:	Wipe Clean

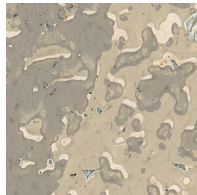
MORE COLORS



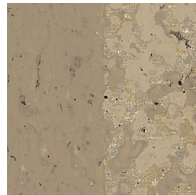
LX1240  
Porcelain



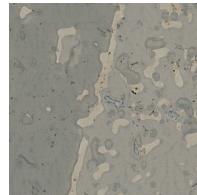
LX1241  
Oatmeal



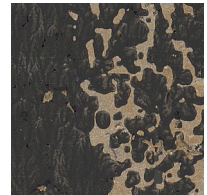
LX1242  
Taupe



LX1243  
Champagne



LX1244  
Dove



LX1245  
Onyx

TO THE TRADE

US MARKETS

Exclusively through Holly Hunt

[hollyhunt.com](http://hollyhunt.com)

INTERNATIONAL MARKETS

800.220.6730

[carlisleco.com](http://carlisleco.com)