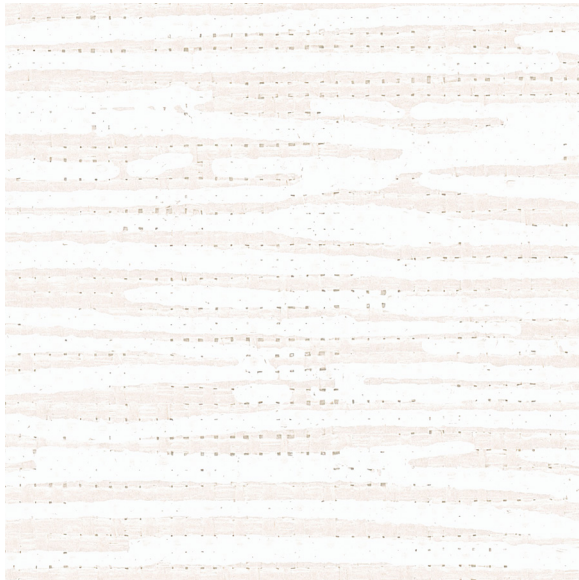




CARLISLE & CO.[®]

WALLCOVERINGS

— EST. 1998 —



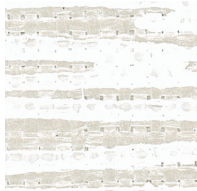
HANDCRAFTED

FREEHAND

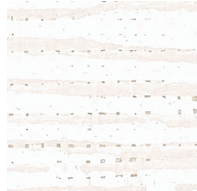
LX1226 PORCELAIN

WIDTH:	27" (68,5 cm) Trimmed
REPEAT:	20 ½" (52,07 cm)
BACKING:	Non-Woven
FLAME RATING:	ASTM E84 Class B
BOLT SIZE:	9 yd (8,2 m)
MATCH:	Straight
MINIMUM ORDER:	9 yd (8,2 m)
MAINTENANCE:	Wipe Clean

MORE COLORS



LX1225
Platinum



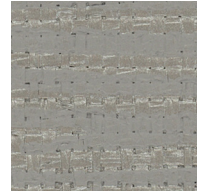
LX1226
Porcelain



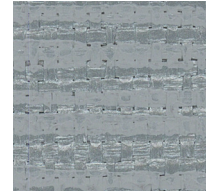
LX1227
Dove



LX1228
Pebble



LX1229
Anchor



LX1230
Stone



LX1231
Fog



LX1232
Sandstone



LX1233
Taupe



LX1234
Rosé



LX1235
Oatmeal



LX1236
Champagne

TO THE TRADE

US MARKETS

Exclusively through Holly Hunt

hollyhunt.com

INTERNATIONAL MARKETS

800.220.6730

carlisleco.com