



CARLISLE & CO.<sup>®</sup>

WALLCOVERINGS

— EST. 1998 —



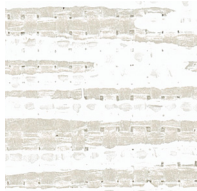
HANDCRAFTED

# FREEHAND

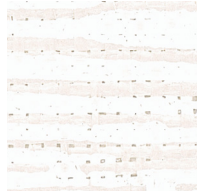
## LX1227 DOVE

<b>WIDTH:</b>	27" (68,5 cm) Trimmed
<b>REPEAT:</b>	20 ½" (52,07 cm)
<b>BACKING:</b>	Non-Woven
<b>FLAME RATING:</b>	ASTM E84 Class B
<b>BOLT SIZE:</b>	9 yd (8,2 m)
<b>MATCH:</b>	Straight
<b>MINIMUM ORDER:</b>	9 yd (8,2 m)
<b>MAINTENANCE:</b>	Wipe Clean

### MORE COLORS



LX1225  
Platinum



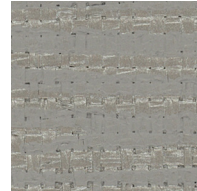
LX1226  
Porcelain



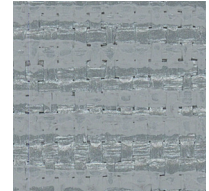
LX1227  
Dove



LX1228  
Pebble



LX1229  
Anchor



LX1230  
Stone



LX1231  
Fog



LX1232  
Sandstone



LX1233  
Taupe



LX1234  
Rosé



LX1235  
Oatmeal



LX1236  
Champagne

### TO THE TRADE

#### US MARKETS

Exclusively through Holly Hunt

[hollyhunt.com](http://hollyhunt.com)

#### INTERNATIONAL MARKETS

800.220.6730

[carlisleco.com](http://carlisleco.com)