

HOLLY HUNT GREAT PLAINS

FABRIC NUMBER AND NAME

1960 / INTERLACE

DESCRIPTION

This two-toned basketweave harmoniously sits with any pattern or texture and coordinates freely across the Great Plains collection. Stocked with knit backing, this upholstery weight is a time saving selection for your next project. Ideal for a chic daybed or sofa, pair with a vivid print such as Reflecting Pool or bold color of Cotton Velvet.

CONTENT

39% Viscose 39% Cotton 22% Polyester

WIDTH

55" (140 cm)

FINISH

- Stocked with a stain repellent finish

COLORS AVAILABLE

- 01 Latte
- 02 Foggy
- 03 Steel Dust
- 04 Dream
- 05 Iced

TESTING INFORMATION

- Passes 30,000 Wyzenbeek Double Rubs
- Passes CAL 117
- Passes NFPA 260
- Passes BS 5852 Source 0 & 1 with FR rated foam

WEIGHT

Upholstery

FREIGHT CODE

D

CLEANING & CARE

- Professional dry cleaning with any solvent except trichloroethylene is recommended.
- For optimal textile performance, maintain fabrics by gently vacuuming dirt before it becomes embedded, wipe or blot spills as soon as they occur, and spot clean soon after stains occur. When spot cleaning, always test a small, inconspicuous part of the furniture in case of discoloration or shrinkage. Avoid excessive brushing that may abrade the fibers.

BACKING RECOMMENDATION

Pre-backed



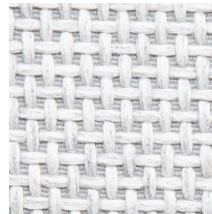
01 LATTE



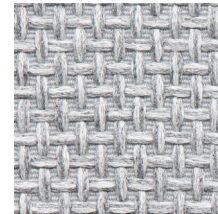
02 FOGGY



03 STEEL DUST



04 DREAM



05 ICED

