

HOLLY HUNT GREAT PLAINS

FABRIC NUMBER AND NAME

1485 / CRESTA

DESCRIPTION

We've been searching for a chenille, woven with natural fibers and CRESTA is the one! A unique option as it has the look of a basket weave linen, but the feel of a plush chenille. Ideal for any sofa or sectional, would be beautiful upholstered on the Pampa sofa!

CONTENT

53% Linen 47% Cotton

WIDTH

54" (137 cm)

COLORS AVAILABLE

- 01 Bright Silver
- 02 Natural
- 03 Echo
- 04 Silver Blue

TESTING INFORMATION

- Passes 100,000 Wyzenbeek Double Rubs

WEIGHT

Upholstery

FREIGHT CODE

C

CLEANING & CARE

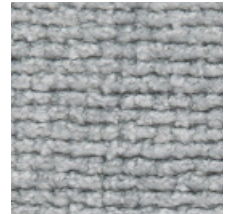
- Maintain fabrics by brushing off dirt before it becomes embedded, wipe up spills as soon as they occur or spot clean soon after stains occur.
- Spot clean only with a soft sponge or cloth. Do not use a brush as it may abrade the fibers. The delicate weave and fine denure of the yarns can break when cleaned with rough bristles.
- For optimal textile performance, maintain fabrics by gently vacuuming dirt before it becomes embedded, wipe or blot spills as soon as they occur, and spot clean soon after stains occur. When spot cleaning, always test a small, inconspicuous part of the furniture in case of discoloration or shrinkage. Avoid excessive brushing that may abrade the fibers.



01 BRIGHT SILVER



02 NATURAL



03 ECHO



04 SILVER BLUE

