

# HOLLY HUNT GREAT PLAINS

## FABRIC NUMBER AND NAME

1307 / LINEN SATEEN

## DESCRIPTION

LINEN SATEEN is a great alternative to wool sateen. This new classic, is a great casual option for light, breezy draperies and the subtle luster of this quality is sure to impress.

## CONTENT

100% Linen

## WIDTH

56" (142 cm)

## FINISH

Stocked with a stain repellent finish

## COLORS AVAILABLE

- 01 Cloud
- 02 Marble
- 03 Tusk
- 04 Steam
- 05 Brass
- 06 Cognac
- 07 Elephant
- 08 Navy

## TESTING INFORMATION

- Passes 100,000 Wyzenbeek Double Rubs

## WEIGHT

Multi-Use

## FREIGHT CODE

B

## CLEANING & CARE

- Dry Clean.
- Maintain fabrics by brushing off dirt before it becomes embedded, wipe up spills as soon as they occur or spot clean soon after stains occur.
- Spot clean only with a soft sponge or cloth. Do not use a brush as it may abrade the fibers. The delicate weave and fine denure of the yarns can break when cleaned with rough bristles.

## BACKING RECOMMENDATION

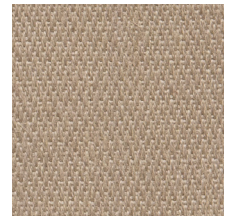
Knit backing is recommended for use on Holly Hunt upholstered product. For all other upholstery, please consult your workroom.



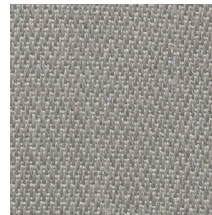
01 CLOUD



02 MARBLE



03 TUSK



04 STEAM



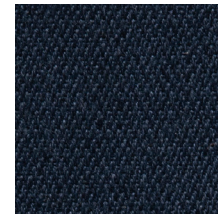
05 BRASS



06 COGNAC



07 ELEPHANT



08 NAVY



Performance Textile