

HOLLY HUNT GREAT PLAINS

FABRIC NUMBER AND NAME

1305 / BRIGHT SIDE

DESCRIPTION

This lustrous wool and silk sateen has a sartorial elegance with a subtle shimmer on the surface. Available in a wide color palette, Bright Side adds a new texture to the Great Plains wool category and is a wonderful substitute for Two Sides because of its familiar fine hand and gorgeous drape.

CONTENT

73% Wool 14% Mohair 13% Silk

WIDTH

54" (137 cm)

COLORS AVAILABLE

- 01 Wheat
- 02 Truffle
- 03 Stone
- 04 Dune
- 05 Rose Quartz
- 06 Steel Lilac
- 07 Cloud
- 08 Peat Heather
- 09 Echo
- 10 Soft Light
- 11 Natural
- 12 Platinum

TESTING INFORMATION

- Passes Cal 117
- Passes NFPA 260
- Passes BS 5852 Source 0 with FR rated foam

WEIGHT

Midweight

FREIGHT CODE

B

CLEANING & CARE

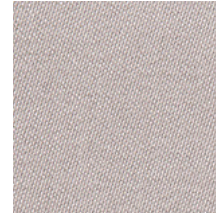
- Dry cleaning only.
- For optimal textile performance, maintain fabrics by gently vacuuming dirt before it becomes embedded, wipe or blot spills as soon as they occur, and spot clean soon after stains occur. When spot cleaning, always test a small, inconspicuous part of the furniture in case of discoloration or shrinkage. Avoid excessive brushing that may abrade the fibers.

BACKING RECOMMENDATION

Knit backing is recommended for use on Holly Hunt upholstery product. For all other upholstery, please consult your workroom.



05 ROSE QUARTZ



06 STEEL LILAC



03 STONE



04 DUNE



01 WHEAT



02 TRUFFLE



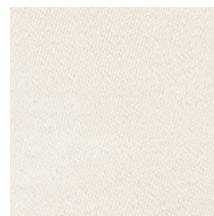
08 PEAT HEATHER



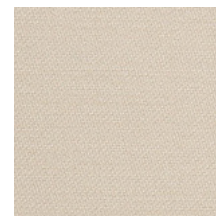
07 CLOUD



09 ECHO



10 SOFT LIGHT



11 NATURAL



12 PLATINUM

