

# HOLLY HUNT GREAT PLAINS

## FABRIC NUMBER AND NAME

1150 / RAISE THE BAR

## DESCRIPTION

A staple in the Great Plains collection, this unique double wide has the perfect range of white, natural, and the perfect grey. With a strong horizontal striping, this article is sure to wow in any space, whether used for sheers or roman shades! Pair with a beautiful solid linen for a completed window look.

## CONTENT

98% Linen, 2% Polyester

## WIDTH

130" (330 cm)

## COLORS AVAILABLE

- 01 Sandbar I
- 02 Sandbar II
- 03 Gris

## WEIGHT

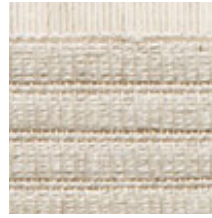
Sheer

## FREIGHT CODE

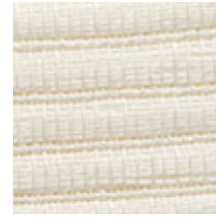
DW

## CLEANING & CARE

- Dry cleaning with any solvent except Trichlor.
- For optimal textile performance, maintain fabrics by gently vacuuming dirt before it becomes embedded, wipe or blot spills as soon as they occur, and spot clean soon after stains occur. When spot cleaning, always test a small, inconspicuous part of the furniture in case of discoloration or shrinkage. Avoid excessive brushing that may abrade the fibers.
- Professional dry cleaning is recommended for overall cleaning.
- As necessary, steaming may be done from back of fabric in downward strokes. Always test a small corner of the fabric first. Keep a few inches of distance between the steamer and the fabric, and do not steam in one place of a fabric for too long. Shipping linens folded may cause creasing that may be difficult to remove, even with steaming. Standard shipping recommended.



01 SANDBAR I



02 SANDBAR II



03 GRIS

