

HOLLY HUNT GREAT PLAINS

FABRIC NUMBER AND NAME

1177 / COCHISE

DESCRIPTION

As we continue to expand upon our growing embroidery category, we are thrilled to introduce COCHISE. This design is a large scaled embroidery portraying a feathered headdress design, executed in a light line quality. We look forward to seeing this artfully installed as draperies, on the back of a chair, or as accent pillows. Launched in three diverse colorways, this pattern is a standout in the HUNTSMAN collection.

CONTENT

Base: 45% Linen, 41% Cotton, 14% Polyester
Embroidery: 65% Viscose, 35% Polyester

WIDTH

51" (130 cm)

REPEAT

15" Vertical x 25" Horizontal
(38 cm Vertical x 63 cm Horizontal)

COLORS AVAILABLE

- 01 Gold
- 02 Hunt
- 03 New Blue

TESTING INFORMATION

- Passes 50,000 Wyzenbeek Double Rubs
- Passes CAL 117
- Passes NFPA 260
- Passes BS 5852 Source 0 with FR Rated Foam
- Passes FR treat to pass BS 5852 Source 1

WEIGHT

Midweight

FREIGHT CODE

B

BACKING RECOMMENDATION

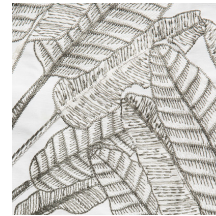
Knit backing is recommended for use on Holly Hunt Upholstered product. For all other upholstery, please consult your workroom.

CLEANING & CARE

- Dry clean only.
- For optimal textile performance, maintain fabrics by gently vacuuming dirt before it becomes embedded, wipe or blot spills as soon as they occur, and spot clean soon after stains occur. When spot cleaning, always test a small, inconspicuous part of the furniture in case of discoloration or shrinkage. Avoid excessive brushing that may abrade the fibers.



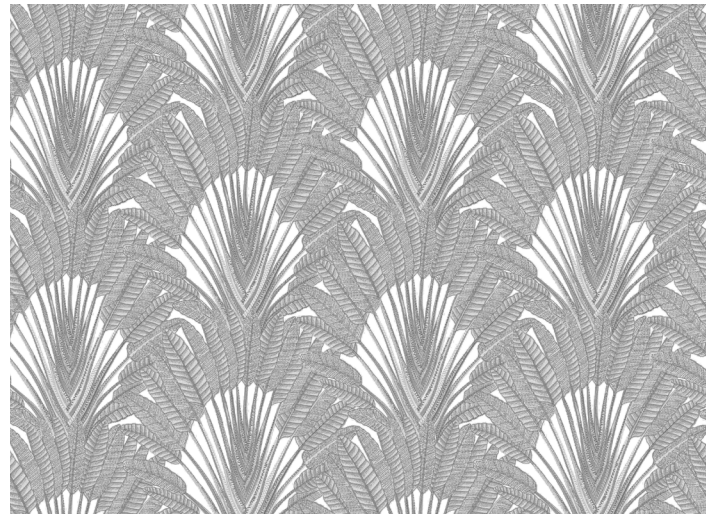
01 GOLD



02 HUNT



03 NEW BLUE



FULL REPEAT

