

# HOLLY HUNT Great Plains

## Fabric Number and Name

1973 / Great Linen

## Description

Launching in a vast array of colors, Great Linen is the go-to for your next project. Versatile for both upholstery and drapery installations, this casual item is stocked with an SR finish for ease of use.

## Content

100% Linen

## Width

55" (140 cm)

## Finish

Stocked with a stain repellent finish

## Colors Available

01 Bleached	09 Warm Grey
02 Swan	12 Aloe
04 Silver	13 Prussian Blue
07 Natural	15 Onyx
08 Rosé	

## Testing Information

- Passes 17,000 Wyzenbeek Double Rubs
- Passes CAL 117
- Passes NFPA 260

## Weight

Multi-Use

## Freight Code

B

## Cleaning & Care

- Dry Clean.
- For optimal textile performance, maintain fabrics by gently vacuuming dirt before it becomes embedded, wipe or blot spills as soon as they occur, and spot clean soon after stains occur. When spot cleaning, always test a small, inconspicuous part of the furniture in case of furniture discoloration or shrinkage. Avoid excessive brushing that may abrade the fibers.

## Backing Recommendation

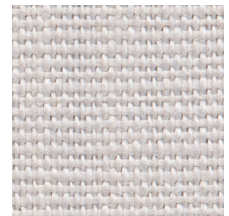
Knit backing is recommended for use on HOLLY HUNT upholstered product, for all other upholstery, please consult your workroom.



01 BLEACHED



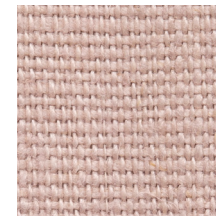
02 SWAN



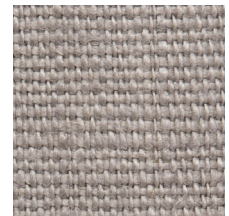
04 SILVER



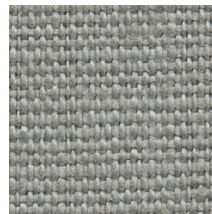
07 NATURAL



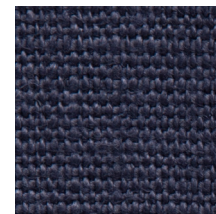
08 ROSÉ



09 WARM GREY



12 ALOE



13 PRUSSIAN BLUE



15 ONYX

