



CARLISLE & CO.

WALLCOVERINGS

— EST. 1998 —

NATURALS

WOVEN RAMIE

The fiber of the renewable ramie plant has been used for centuries. Still harvested by hand, it produces a lovely monochrome natural weave with the classic paneling effect and distinctive color variances inherent to organic grasscloth.

LX1927 TWILIGHT



SPECIFICATIONS

WIDTH:	36" (91,44 cm) Trimmed
REPEAT:	None
MATCH:	Random
COMPOSITION:	Ramie & Cotton on Non-Woven Backing
FLAME RATING:	ASTM E84 Class B
MAINTENANCE:	Soft Dry Brush
BOLT SIZE:	8 yd (7,32 m)

ADDITIONAL INFORMATION

Unique hanging instructions accompany all products. Hiring a professional installer for these specialty products is recommended.

Color and texture may vary due to the inherent nature of this organic woven ramie grasscloth. We recommend ordering a sample cutting for approval.

ORDERING:

PRICING:	Priced by the linear yard.
MINIMUM ORDER:	8 yd (7,32 m)
ORDER INCREMENT:	8 yd (7,32 m)
STOCK:	USA

Memos available upon request.

MORE COLORS



LX1925 Dove



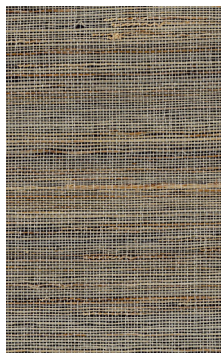
LX1927 Twilight



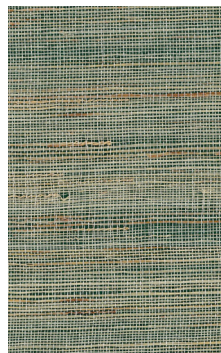
LX1928 Oatmeal



LX1929 Canyon



LX1930 Mocha



LX1931 Sage

TO THE TRADE

US MARKETS

Exclusively through Holly Hunt
hollyhunt.com

CANADA MARKETS

Crown Surface Solutions
crownsurfacesolutions.com

INTERNATIONAL MARKETS

800.220.6730
carlisleco.com