



# CARLISLE & CO.

WALLCOVERINGS

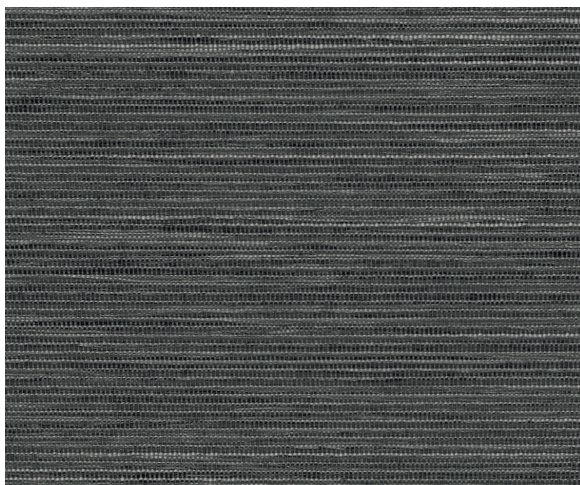
— EST. 1998 —

## HIGH PERFORMANCE TEXTILES

# SOLANA SILK

The woven interplay of earthy neutrals and sophisticated colors creates a refined, textural stria in this distinctive textile. Casual yet elegant, it wraps spaces in timeless beauty.

## LX1909 ONYX



## SPECIFICATIONS

WIDTH:	60" (152,4 cm) Untrimmed Trims to 55" (139,7 cm)
REPEAT:	Random
MATCH:	Non-Reversible, Essentially Seamless
BACKING:	Acrylic
CONTENT:	46% Olefin, 11% Polyester, 43% Post-Consumer Recycled Polyester
FLAME RATING:	ASTM E84 Class A
WEIGHT:	15 oz.
FINISH:	Stain Repellent
MAINTENANCE:	Scrubable/Washable

## FEATURES

- Created from recycled content.
- Created with No PVC, No Heavy Metals or Formaldehyde, No ODSs, No Phthalates, No VOCs
- Can contribute towards LEED points.

## ADDITIONAL INFORMATION

Unique hanging instructions accompany all products. Hiring a professional installer for these specialty products is recommended.

## ORDERING:

PRICING:	Priced by the yard.
MINIMUM ORDER:	15 yd (13,7 m)
ORDER INCREMENT:	5 yd (4,5 m)
STOCK:	USA

Memos available upon request.

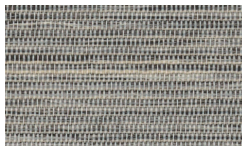
## MORE COLORS



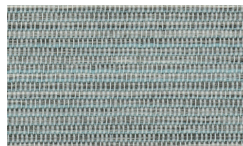
LX1900 Oatmeal



LX1901 Pebble



LX1902 Dove



LX1903 Sky



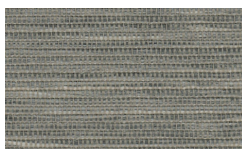
LX1904 Sandstone



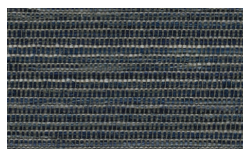
LX1905 Taupe



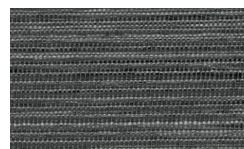
LX1906 Cinnamon



LX1907 Anchor



LX1908 Twilight



LX1909 Onyx

## TO THE TRADE

### US MARKETS

Exclusively through Holly Hunt  
hollyhunt.com

### CANADA MARKETS

Crown Surface Solutions  
crownsurfacesolutions.com

### INTERNATIONAL MARKETS

800.220.6730  
carlisleco.com