



# CARLISLE & CO.

WALLCOVERINGS

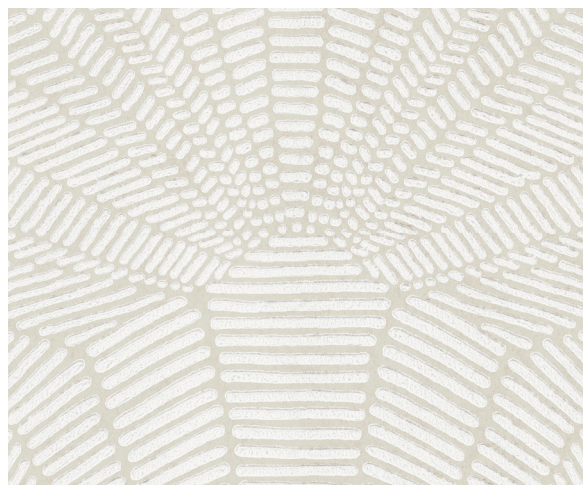
— EST. 1998 —

## HANDCRAFTED

# SOLEIL

Styled with a lofted hand by master craftsmen, this radiant all-over pattern creates a dimensional architectural effect. The background of matte fibers softens the sleek, angled lines to create a sense of quiet elegance.

## LX1912 OATMEAL



## SPECIFICATIONS

WIDTH:	27" (68,58 cm) Trimmed
REPEAT:	25.25" (64,13 cm)
MATCH:	Straight
COMPOSITION:	Surface Ink on Non-Woven Backing
FLAME RATING:	ASTM E84 Class A
MAINTENANCE:	Washable
BOLT SIZE:	9 yd (8,23 m)

## ADDITIONAL INFORMATION

Unique hanging instructions accompany all products. Hiring a professional installer for these specialty products is recommended.

Color and texture may vary slightly due to the organic quality of the substrate material. These subtle differences should be celebrated as the mark of being hand-made.

## ORDERING:

PRICING:	Priced by the linear yard.
MINIMUM ORDER:	9 yd (8,23 m)
ORDER INCREMENT:	9 yd (8,23 m)
STOCK:	USA

Memos available upon request.

## MORE COLORS



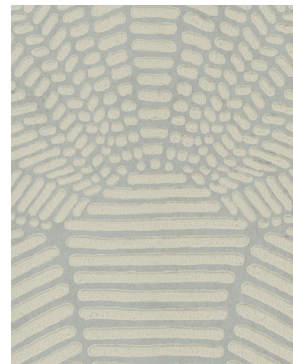
LX1910 Sandstone



LX1911 Platinum



LX1912 Oatmeal



LX1913 Dove

## TO THE TRADE

### US MARKETS

Exclusively through Holly Hunt  
hollyhunt.com

### CANADA MARKETS

Crown Surface Solutions  
crownsurfacesolutions.com

### INTERNATIONAL MARKETS

800.220.6730  
carlisleco.com



CARLISLE & CO.

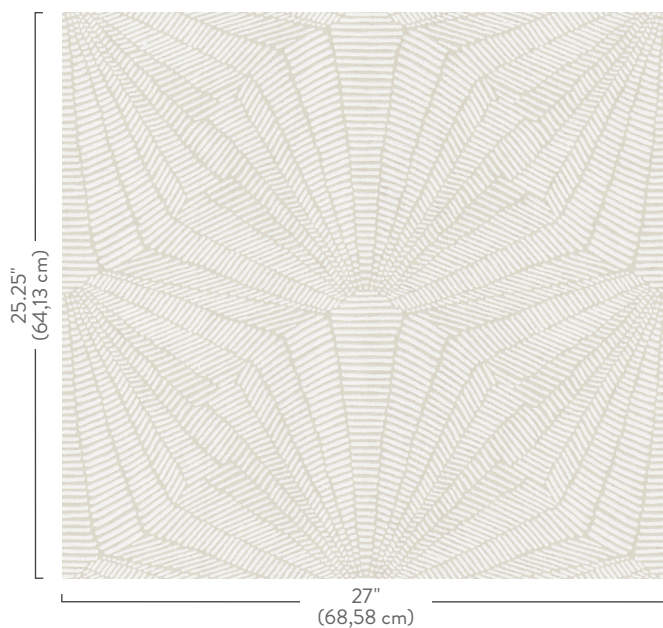
WALLCOVERINGS

— EST. 1998 —

HANDCRAFTED

SOLEIL

LX1912 OATMEAL



## TO THE TRADE

### US MARKETS

Exclusively through Holly Hunt  
[hollyhunt.com](http://hollyhunt.com)

### CANADA MARKETS

Crown Surface Solutions  
[crownsurfacesolutions.com](http://crownsurfacesolutions.com)

### INTERNATIONAL MARKETS

800.220.6730  
[carlisleco.com](http://carlisleco.com)