



CARLISLE & CO.

WALLCOVERINGS

— EST. 1998 —

HANDCRAFTED

HERITAGE LINEN

This inviting, hand-crafted texture is artisan-printed with lofted inks on a natural paperweave. Natural dyes and minerals inspire the soft palette with a modest touch of glamour.

LX1917 TAUPE



SPECIFICATIONS

WIDTH:	27" (68,58 cm) Trimmed
REPEAT:	25.25" (64,13 cm)
MATCH:	Drop
COMPOSITION:	Paperweave with Surface Ink on Non-Woven Backing
FLAME RATING:	ASTM E84 Class B
MAINTENANCE:	Soft Dry Brush
BOLT SIZE:	9 yd (8,23 m)

ADDITIONAL INFORMATION

Unique hanging instructions accompany all products. Hiring a professional installer for these specialty products is recommended.

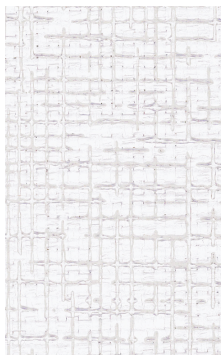
Color and texture may vary slightly due to the organic quality of the substrate material. These subtle differences should be celebrated as the mark of being hand-made.

ORDERING:

PRICING:	Priced by the linear yard.
MINIMUM ORDER:	9 yd (8,23 m)
ORDER INCREMENT:	9 yd (8,23 m)
STOCK:	USA

Memos available upon request.

MORE COLORS



LX1915 Porcelain



LX1916 Almond



LX1917 Taupe



LX1918 Platinum



LX1919 Fog



LX1920 Dusk

TO THE TRADE

US MARKETS

Exclusively through Holly Hunt
hollyhunt.com

CANADA MARKETS

Crown Surface Solutions
crownsurfacesolutions.com

INTERNATIONAL MARKETS

800.220.6730
carlisleco.com