



CARLISLE & CO.

WALLCOVERINGS

— EST. 1998 —

HIGH PERFORMANCE TEXTILES

SOLANA SILK

The woven interplay of earthy neutrals and sophisticated colors creates a refined, textural stria in this distinctive textile. Casual yet elegant, it wraps spaces in timeless beauty.

LX1907 ANCHOR



SPECIFICATIONS

WIDTH:	60" (152,4 cm) Untrimmed Trims to 55" (139,7 cm)
REPEAT:	Random
MATCH:	Non-Reversible, Essentially Seamless
BACKING:	Acrylic
CONTENT:	46% Olefin, 11% Polyester, 43% Post-Consumer Recycled Polyester
FLAME RATING:	ASTM E84 Class A
WEIGHT:	15 oz.
FINISH:	Stain Repellent
MAINTENANCE:	Scrubable/Washable

FEATURES

- Created from recycled content.
- Created with No PVC, No Heavy Metals or Formaldehyde, No ODSs, No Phthalates, No VOCs
- Can contribute towards LEED points.

ADDITIONAL INFORMATION

Unique hanging instructions accompany all products. Hiring a professional installer for these specialty products is recommended.

ORDERING:

PRICING:	Priced by the yard.
MINIMUM ORDER:	15 yd (13,7 m)
ORDER INCREMENT:	5 yd (4,5 m)
STOCK:	USA

Memos available upon request.

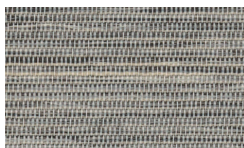
MORE COLORS



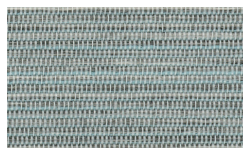
LX1900 Oatmeal



LX1901 Pebble



LX1902 Dove



LX1903 Sky



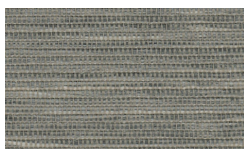
LX1904 Sandstone



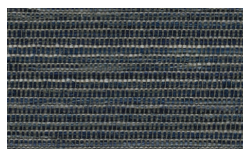
LX1905 Taupe



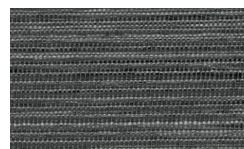
LX1906 Cinnamon



LX1907 Anchor



LX1908 Twilight



LX1909 Onyx

TO THE TRADE

US MARKETS

Exclusively through Holly Hunt
hollyhunt.com

CANADA MARKETS

Crown Surface Solutions
crownsurfacesolutions.com

INTERNATIONAL MARKETS

800.220.6730
carlisleco.com