



CARLISLE & CO.

WALLCOVERINGS

— EST. 1998 —

HANDCRAFTED

IMPRESSION

Rendered with sculptured inks on natural paper weave, oversized graphic lines arch to create bold curves of deep texture echoing hand applied modern art. The tone-on-tone palette creates a distinctive quiet statement adding prestige to any interior space.

LX1740 PORCELAIN



SPECIFICATIONS

WIDTH:	27" (68,58 cm) Trimmed
REPEAT:	25.25" (64,13 cm)
MATCH:	Drop
COMPOSITION:	Paperweave with Surface Ink on Non-Woven Backing
FLAME RATING:	ASTM E84 Class B
MAINTENANCE:	Soft Dry Brush
BOLT SIZE:	9 yd (8,23 m)

ADDITIONAL INFORMATION

Unique hanging instructions accompany all products. Hiring a professional installer for these specialty products is recommended.

Color and texture may vary slightly due to the organic quality of the substrate material. These subtle differences should be celebrated as the mark of being hand-made.

ORDERING:

PRICING:	Priced by the linear yard.
MINIMUM ORDER:	9 yd (8,23 m)
ORDER INCREMENT:	9 yd (8,23 m)
STOCK:	USA

Memos available upon request.

MORE COLORS



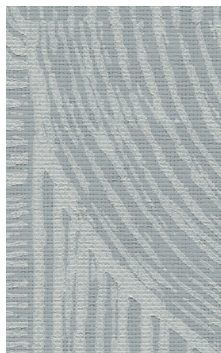
LX1740 Porcelain



LX1741 Taupe



LX1742 Fog



LX1743 Stone



LX1744 Oatmeal



LX1745 Onyx

TO THE TRADE

US MARKETS

Exclusively through Holly Hunt
hollyhunt.com

CANADA MARKETS

Crown Surface Solutions
crownsurfacesolutions.com

INTERNATIONAL MARKETS

800.220.6730
carlisleco.com



CARLISLE & CO.

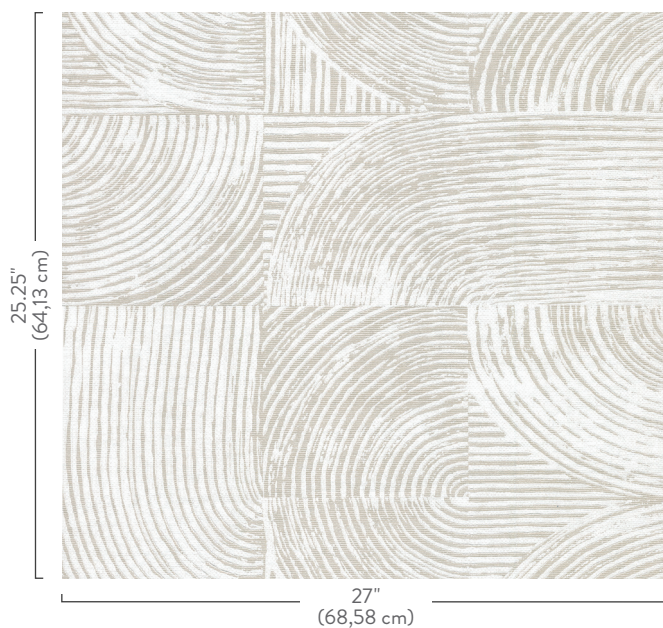
WALLCOVERINGS

— EST. 1998 —

HANDCRAFTED

IMPRESSION

LX1740 PORCELAIN



TO THE TRADE

US MARKETS

Exclusively through Holly Hunt
hollyhunt.com

CANADA MARKETS

Crown Surface Solutions
crownsurfacesolutions.com

INTERNATIONAL MARKETS

800.220.6730
carlisleco.com