



# CARLISLE & CO.

WALLCOVERINGS

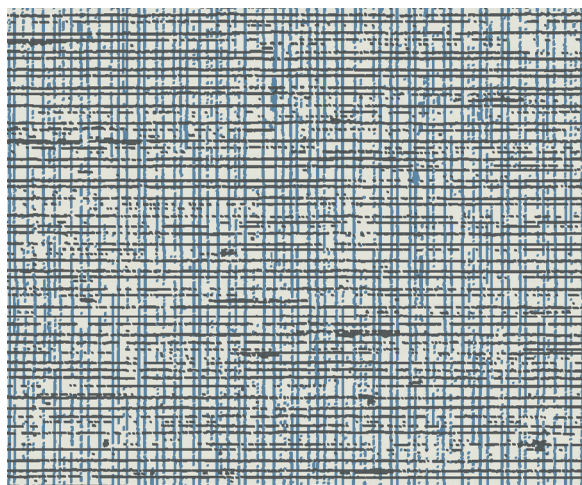
— EST. 1998 —

## HIGH PERFORMANCE TEXTILES

# ARCADIA LINEN

A woven textile captures all the simplicity synonymous with this elegant linen design. Thin strands of glass are extruded into many fibers, making this a sustainable, Type II, non-PVC wallcovering which will add durability and function to any environment.

## LX1698 TWILIGHT



## SPECIFICATIONS

WIDTH:	57.5" (146,05 cm) Untrimmed Trims to 54" (137,16 cm)
REPEAT:	Random
MATCH:	Reversible
COMPOSITION:	Surface Ink on Woven Textile Made from 100% Glass Fiber
FLAME RATING:	ASTM E84 Class A
MAINTENANCE:	Scrubable/Washable

## FEATURES

PVC-Free  
Breaking strength, tear resistance, and blocking resistance meets or exceeds Type II

## ADDITIONAL INFORMATION

Unique hanging instructions accompany all products. Hiring a professional installer for these specialty products is recommended.

## ORDERING:

PRICING:	Priced by the yard.
MINIMUM ORDER:	15 yd (13,7 m)
ORDER INCREMENT:	5 yd (4,5 m)
STOCK:	USA

Memos available upon request.

## MORE COLORS



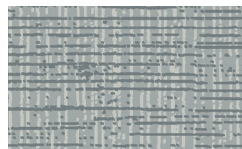
LX1690 Porcelain



LX1691 Pebble



LX1692 Taupe



LX1693 Steel Blue



LX1694 Sandstone



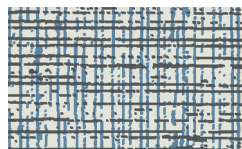
LX1695 Oatmeal



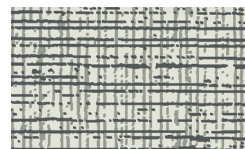
LX1696 Sage



LX1697 Anchor



LX1698 Twilight



LX1699 Onyx

## TO THE TRADE

### US MARKETS

Exclusively through Holly Hunt  
hollyhunt.com

### CANADA MARKETS

Crown Surface Solutions  
crownsurfacesolutions.com

### INTERNATIONAL MARKETS

800.220.6730  
carlisleco.com