



# CARLISLE & CO.

WALLCOVERINGS

— EST. 1998 —

## NATURALS

# APOLLO

Handcrafted by artisans, this tightly woven design is created from horizontal channels of multi-colored paper fibers.

## LX1488 TWILIGHT



### SPECIFICATIONS

WIDTH:	36" (91,44 cm) Trimmed
REPEAT:	None
MATCH:	Random
BACKING:	Paper
CONTENT:	70% Paper, 30% Synthetic Fiber
FLAME RATING:	ASTM E84 Class A
MAINTENANCE:	Soft Dry Brush
BOLT SIZE:	8 yd (7,32 m)

### ADDITIONAL INFORMATION

Unique hanging instructions accompany all products. Hiring a professional installer for these specialty products is recommended.

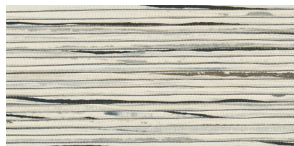
Color and texture may vary slightly due to the organic quality of the substrate material. These subtle differences should be celebrated as the mark of being hand-made.

### ORDERING:

PRICING:	Priced by the linear yard.
MINIMUM ORDER:	8 yd (7,32 m)
ORDER INCREMENT:	8 yd (7,32 m)
STOCK:	USA

Memos available upon request.

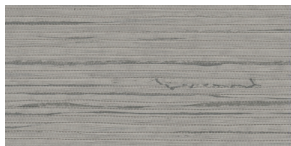
## MORE COLORS



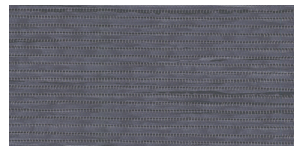
LX1485 Porcelain



LX1486 Pebble



LX1487 Dove



LX1488 Twilight



LX1489 Sandstone



LX1490 Oatmeal



LX1491 Driftwood



LX1492 Anchor

## TO THE TRADE

### US MARKETS

Exclusively through Holly Hunt  
hollyhunt.com

### CANADA MARKETS

Crown Surface Solutions  
crownsurfacesolutions.com

### INTERNATIONAL MARKETS

800.220.6730  
carlisleco.com