



CARLISLE & CO.

WALLCOVERINGS

— EST. 1998 —

HIGH PERFORMANCE VINYL

IN NEED OF TWEED

This tailored and versatile design replicates a fine woven linen, merging beauty with the durability of high-performance vinyl. An essential texture complimenting any interior space.

LX1329 ANCHOR



SPECIFICATIONS

WIDTH:	55.5" (140,97 cm) Untrimmed Trims to 54" (137,16 cm)
REPEAT:	Random
MATCH:	Non-Reversible
BACKING:	Non-Woven
FLAME RATING:	ASTM E84 Class A
WEIGHT:	20 oz. Type II Vinyl
FINISH:	Antimicrobial Technology
MAINTENANCE:	Scrubable/Washable

FEATURES

Non-Woven backed vinyl contains recycled content.

HPD & EPD Available

Printed with water-based inks.

Passes California CDPH Standard Method (Section 01350)

Can contribute towards LEED points.



Advanced antimicrobial technology made with EPA-registered ingredients.

ADDITIONAL INFORMATION

Unique hanging instructions accompany all products. Hiring a professional installer for these specialty products is recommended.

ORDERING:

PRICING:	Priced by the yard.
MINIMUM ORDER:	15 yd (13,7 m)
ORDER INCREMENT:	5 yd (4,5 m)
STOCK:	USA

Memos available upon request.

MORE COLORS



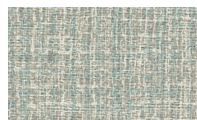
LX1320 Porcelain



LX1321 Pebble



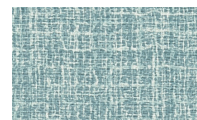
LX1322 Taupe



LX1323 Juniper



LX1324 Wicker



LX1325 Cerulean



LX1326 Fog



LX1327 Dove



LX1328 Sky



LX1329 Anchor



LX1330 Stone



LX1331 Onyx

TO THE TRADE

US MARKETS

Exclusively through Holly Hunt
hollyhunt.com

CANADA MARKETS

Crown Surface Solutions
crownsurfacesolutions.com

INTERNATIONAL MARKETS

800.220.6730
carlisleco.com