



HANDWOVEN WINDOW COVERINGS

PRODUCT SAFETY

At CONRAD we believe safety should never be compromised. That is why we have taken steps to redesign how our shades are raised and lowered, conforming to the American National Standards Institute/Window Covering Manufacturers Association (ANSI/WCMA) A100.1-2022 guidelines.

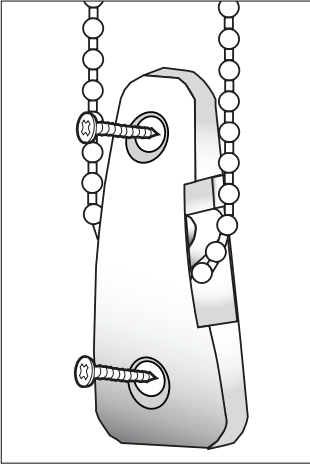
Control loop operated window coverings, including Roman shades, top-down only shades, manual roll-up shades, and sun control/privacy roller shades are equipped with tension control devices as a safety precaution. The device must be securely installed for the shade to operate.

FURTHER RECOMMENDATIONS

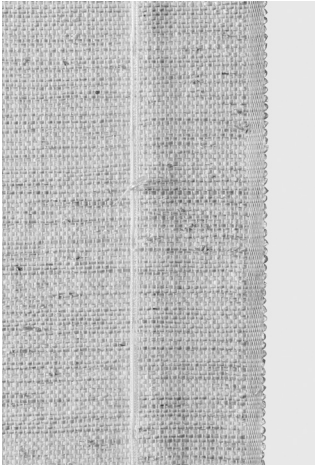
- Replace shades manufactured prior to 2001
- Keep all operating cords out of reach of children and pets
- Make sure that control loops are anchored correctly to wall or floor
- Keep all furniture that young children may play or sleep upon away from windows and cords



Instruction tag



Tension device



Ladder tape (back view)

▲ WARNING		Window Blind Cord Strangulation Risk A damaged, loose, or missing tension device poses a strangulation risk to children. Remove from use and repair or replace if tension device is damaged, loose, or missing.	08/2023 ANSI/WCMA 5.1.1
		Riesgo de estrangulamiento por cordón de persiana Un dispositivo de tensión dañado, suelto o faltante presenta un riesgo de estrangulamiento para niños. Retire y repare o reemplace si el dispositivo de tensión está dañado, suelto o falta.	