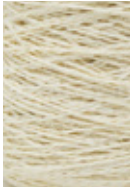


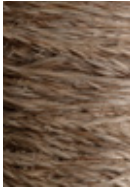
VERDI

COLOR & MATERIALS PALETTE

FIQUE FIBER



White
F01



Natural
F02



Natural White
F34



Khaki
F03



Natural-Khaki
F30



Natural-Coffee
F04



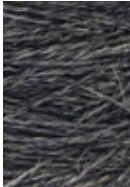
Coffee
F05



White-Gray
F08



Gray
F09



Black-Gray
F07



Black
F06



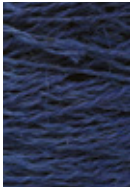
Mango Green
F21



Lime Green
F31



Olive Green
F23



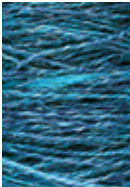
Royal Blue
F25



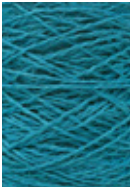
Navy Blue
F24



Celeste
F29



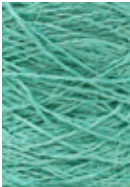
Tayrona Blue
F26



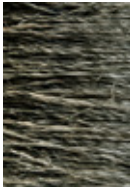
Turquoise
F27



Light Turquoise
F28



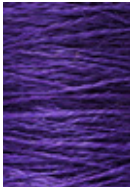
Mint
F22



Amazon Green



Light Purple
F10



Purple
F11



Fuchsia
F12



Red
F13



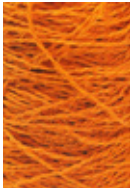
Burgundy
F14



Ochre
F15



Sunset Red
F16



Orange
F17



Sunset Yellow
F19



Mustard
F20



Yellow
F18

- Grown and harvested in Colombia.
- Softer than sisal and more durable than jute.
- Resistant to everyday foot traffic.
- VERDI is unable to accommodate custom color requests for fique fiber but can accommodate custom yarn combinations using the existing color palette.

VERDI

COLOR & MATERIALS PALETTE

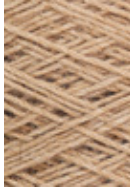
ALPACA



White
A01



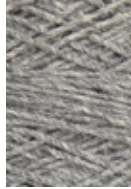
Natural
A10



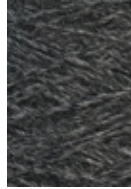
Beige
A02



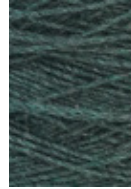
Bone
A03



Gray
A04



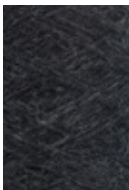
Black-Gray
A05



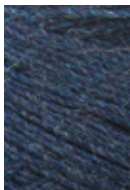
Pine Green
A09



Turquoise
A08



Black
A06



Navy Blue
A07



Olive Green
A11



Taupe
A12

- Ethically sourced from Peru.
- Luxuriously soft underfoot.
- Resistant to everyday foot traffic.
- VERDI is unable to accommodate custom color requests for alpaca fiber but can accommodate custom yarn combinations using the existing color palette.

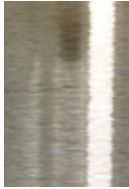
VERDI

COLOR & MATERIALS PALETTE

METALS



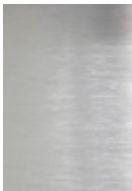
Copper
M01



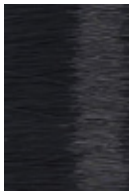
Stainless Steel
M02

- Copper threads have a special coating to prevent patina, rust, and oxidation.
- Stainless Steel threads are hypoallergenic and extremely durable.

ACRYLIC



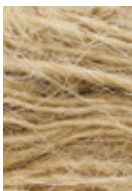
Transparent
N01



Black
N02

- Lightweight fiber option.
- Resistant to ultraviolet light in areas with high sun exposure.

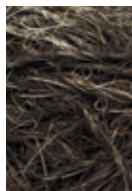
HORSE HAIR



Natural White
R06



Natural Coffee
R03



Natural Black
R05

- Ethically sourced from Colombian horses.
- Bespoke, un-dyed natural quality.
- Extremely durable.