

# HOLLY HUNT GREAT PLAINS

## FABRIC NUMBER AND NAME

4857 / PERFECT CATCH

## DESCRIPTION

Perfect Catch is a dramatic and best-selling open weave sheer that features multiple yarn structures to create a textured appearance. This item can be FR treated for contract settings to pass NFPA 701.

## CONTENT

65% Viscose 23% Linen 12% Cotton

## WIDTH

57" (145 cm)

## COLORS AVAILABLE

- 01 Barracuda
- 02 Silver Marlin
- 04 Snow
- 05 Greige
- 06 Soft Light
- 07 Sandstone
- 08 Cement
- 09 Serenity

## TESTING INFORMATION

- FR treat to pass NFPA 701

## WEIGHT

Window

## FREIGHT CODE

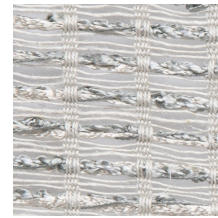
A

## CLEANING & CARE

- Professional dry cleaning is recommended.
- For optimal textile performance, maintain fabrics by gently vacuuming dirt before it becomes embedded, wipe or blot spills as soon as they occur, and spot clean soon after stains occur. When spot cleaning, always test a small, inconspicuous part of the furniture in case of discoloration or shrinkage. Avoid excessive brushing that may abrade the fibers.



04 SNOW



05 GREIGE



02 SILVER MARLIN



06 SOFT LIGHT



07 SANDSTONE



08 CEMENT



01 BARRACUDA



09 SERENITY

