

# HOLLY HUNT GREAT PLAINS

---

## FABRIC NUMBER AND NAME

3292 / STUART

## DESCRIPTION

STUART's two-toned basket weave features 32% cashmere, personifying handcrafted luxury! Offered in a range of classic cashmere neutrals, STUART is bound to add softness and warmth to any application.

## CONTENT

68% Wool 32% Cashmere

## WIDTH

52" (132 cm)

## COLORS AVAILABLE

- 02 Frost
- 03 Buff

## TESTING INFORMATION

- Passes 20,000 Wyzenbeek Double Rubs
- Passes CAL 117
- Passes NFPA 260
- Passes BS 5852 Source 0 & 1 with FR rated foam

## WEIGHT

Multi-use

## FREIGHT CODE

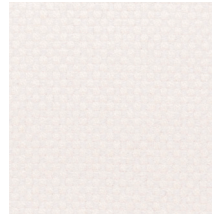
C

## CLEANING & CARE

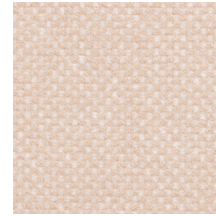
- Professional dry cleaning recommended.
- For optimal textile performance, maintain fabrics by gently vacuuming dirt before it becomes embedded, wipe or blot spills as soon as they occur, and spot clean soon after stains occur. When spot cleaning, always test a small, inconspicuous part of the furniture in case of furniture discoloration or shrinkage. Avoid excessive brushing that may abrade the fibers.

## BACKING RECOMMENDATION

Knit backing is recommended for use on HOLLY HUNT upholstered product. For all other upholstery, please consult your workroom.



02 FROST



03 BUFF

