

# HOLLY HUNT GREAT OUTDOORS

## FABRIC NUMBER AND NAME

193 / HIGH DUNE

## DESCRIPTION

Just as its name implies, High Dune is a jacquard pattern inspired by the look and texture of sand dunes. The neutral palette and useable scale create a solution dyed acrylic textile with an unlimited variety of uses.

## CONTENT

100% Solution Dyed Acrylic

## WIDTH

53.75" (136.5 cm)

## REPEAT

12.5" Vertical 13.25" Horizontal  
(32 cm Vertical 33.5 cm Horizontal)

## COLORS AVAILABLE

- 01 Macchiato
- 02 Turmeric

## PERFORMANCE CHARACTERISTICS

- Fade-resistant to sunlight
- Chlorine resistant
- Colorfast
- Bleach cleanable
- Mold/mildrew resistant
- For use indoors or out

## TESTING INFORMATION

- Passes CAL 117
- Passes NFPA 260
- Passes BS 5852 Source 0 & 1 with FR Rated Foam

## WEIGHT

Upholstery

## FREIGHT CODE

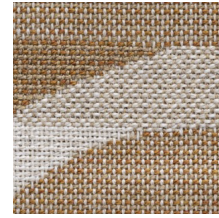
B

## CLEANING & CARE

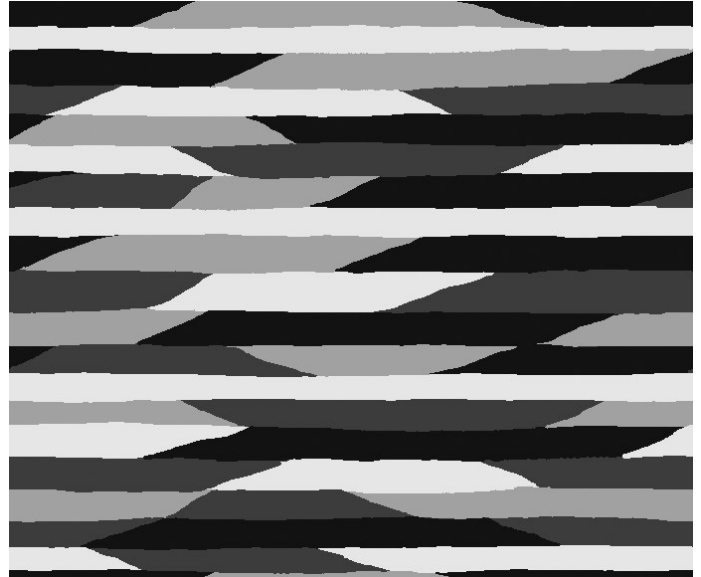
- 100% Solution Dyed fibers are kidproof, dyed-through, easy to clean and don't fade!
- Maintain fabrics by brushing off dirt before it becomes embedded, wipe up spills as soon as they occur or spot clean soon after stains occur.
- Spot clean only with a soft sponge or cloth. Do not use a brush as it may abrade the fibers. The delicate weave and the yarns can break when cleaned with rough bristles.



01 MACCHIATO



02 TURMERIC



FULL REPEAT

