

# HOLLY HUNT GREAT OUTDOORS

## FABRIC NUMBER AND NAME

128 / LINDOR

## DESCRIPTION

A basic basket weave, this article is a perfect base for any palette. Offered in beautiful optic options as well as heathered colorways, clients will be able to find the right color for their next project. Due to its high performance characteristics, this article acts as a great sub for any indoor use linen, but also pairs beautifully with our new outdoor furniture finishes for outdoor use. A go-to for any designer, keep these article on your mood board!

## CONTENT

100% Solution Dyed Acrylic

## WIDTH

54" (137 cm)

## FINISH

Stocked with a stain repellent finish

## COLORS AVAILABLE

- 01 Tusk
- 04 Limestone
- 05 Undertow
- 06 Sun Stone
- 07 Nightfall

## PERFORMANCE CHARACTERISTICS

- Fade-resistant to sunlight
- Chlorine resistant
- Colorfast
- Bleach cleanable
- Mold/mildrew resistant
- For use indoors or out

## TESTING INFORMATION

- Passes CAL 117
- Passes NFPA 260

## WEIGHT

Midweight

## FREIGHT CODE

C

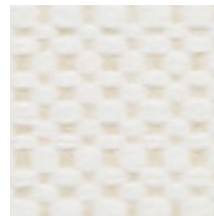
## CLEANING & CARE

- Dry cleaning with any solvent except Trichlor.
- 100% Solution Dyed fibers are kidproof, dyed-through, easy to clean and don't fade!

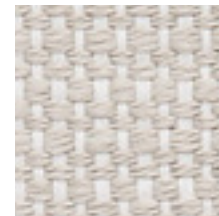
*(Cleaning and care, continued...)*

- Maintain fabrics by brushing off dirt before it becomes embedded, wipe up spills as soon as they occur or spot clean soon after stains occur.
- Spot clean only with a soft sponge or cloth. Do not use a brush as it may abrade the fibers. The delicate weave and fine denure of the yarns can break when cleaned with rough bristles.
- If upholstered, be certain to remove all water or bleach after cleaning. A wet/dry extractor is recommended to thoroughly flush the affected area and remove all moisture.

Extensive cleaning instructions available at [www.hollyhunt.com](http://www.hollyhunt.com).



01 TUSK



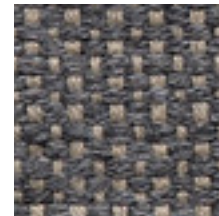
04 LIMESTONE



05 UNDERTOW



06 SUN STONE



07 NIGHTFALL

