

# HOLLY HUNT GREAT PLAINS

## FABRIC NUMBER AND NAME

1500 / CASABLANCA

## DESCRIPTION

A new heavier version of Marrakesh with backing woven-in to prevent stretch! A rich and varied color palette is flash-dyed to give tonal color variation in the yarns. Many colors are updated versions of the old Marrakesh best sellers. Perfect in kitchens or contract spaces.

## CONTENT

82% Polyamide 18% Cotton

## WIDTH

53" (135 cm)

## PERFORMANCE CHARACTERISTICS

- Stocked with knit backing for convenience and added stability

## COLORS AVAILABLE

- 01 Carrera
- 02 Sea Mist
- 06 Echo
- 08 Prussian
- 13 Absinthe

## TESTING INFORMATION

- CAL 117: Pass
- NFPA 260: Class I
- Passes 100,000 Wyzenbeek Double Rubs  
Suitable for residential and contract use
- Passes BS 5852 Source 0 with FR rated foam

## WEIGHT

Upholstery

## FREIGHT CODE

C

## CLEANING & CARE

- Professional dry cleaning is recommended.
- For optimal textile performance, maintain fabrics by gently vacuuming dirt before it becomes embedded, wipe or blot spills as soon as they occur, and spot clean soon after stains occur. When spot cleaning, always test a small, inconspicuous part of the furniture in case of discoloration or shrinkage. Avoid excessive brushing that may abrade the fibers.

## NOTES

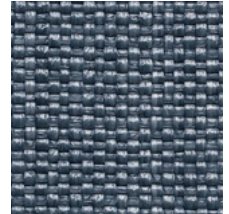
This item should not be used for tight upholstery applications in humid environments.



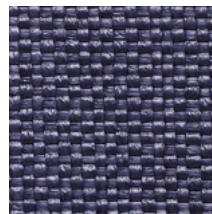
01 CARRERA



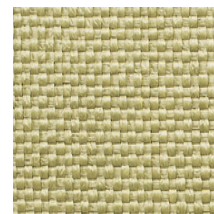
02 SEA MIST



06 ECHO



08 PRUSSIAN



13 ABSINTHE

