

HOLLY HUNT GREAT PLAINS

FABRIC NUMBER AND NAME

2025 / DEBONAIR

DESCRIPTION

Every yarn in this multi-toned texture is recycled. Versatile and refined, Debonair is a mixture of tweed combined with a small-scale basketweave, making it equally gorgeous at the window or for upholstery.

CONTENT

52% Recycled Cotton, 24% Recycled Viscose, 9% Recycled Linen, 8% Recycled Wool, 7% Recycled Polyester

WIDTH

54" (137 cm)

COLORS AVAILABLE

- 01 Daybreak
- 02 Dream
- 03 Warm Grey
- 04 Cliffside
- 05 Evergreen
- 06 Citrine
- 07 Sedona
- 08 Aloe

TESTING INFORMATION

- Passes 50,000 Wyzenbeek Double Rubs
- Passes CAL 117
- Passes NFPA 260
- Passes BS 5852 source 0 with FR rated foam

WEIGHT

Multiuse

FREIGHT CODE

B

CLEANING & CARE

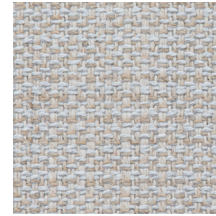
- Dry clean.
- For optimal textile performance, maintain fabrics by gently cleaning the surface regularly with a soft cloth, wipe or blot spills as soon as they occur, and spot clean soon after stains occur.

BACKING RECOMMENDATION

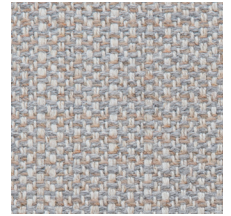
Knit backing is recommended for use on Holly Hunt upholstered product. For all other upholstery, please consult your workroom.



01 DAYBREAK



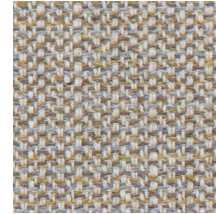
02 DREAM



03 WARM GREY



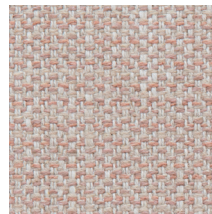
04 CLIFFSIDE



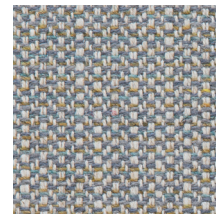
05 EVERGREEN



06 CITRINE



07 SEDONA



08 ALOE

