

HOLLY HUNT GREAT PLAINS

FABRIC NUMBER AND NAME

1618 / HEMBRA

DESCRIPTION

Hembra, another term for female or feminine, is a long-haired beauty. This looks like faux fur but is actually a velvet, woven of 75% alpaca. The soft and versatile color palette makes for a textile that is uniquely HOLLY HUNT.

CONTENT

75% Alpaca, 23% Nylon

WIDTH

55" (139.5 cm)

COLORS AVAILABLE

- 01 Morning Mist
- 02 Natural
- 03 Wheat
- 04 Clay
- 05 Twig
- 06 Cloud
- 07 New Blue
- 08 Charcoal
- 09 Sumac
- 10 Palm

TESTING INFORMATION

- Passes 45,000 Wyzenbeek Double Rubs
- Passes CAL 117
- Passes NFPA 260
- Passes BS 5852 source 0 & 1 with FR rated foam

WEIGHT

Upholstery

FREIGHT CODE

D

CLEANING & CARE

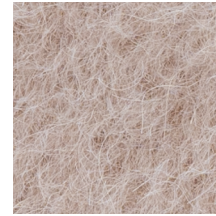
- Dry clean.
- For optimal textile performance, maintain fabrics by gently cleaning the surface regularly with a soft cloth, wipe or blot spills as soon as they occur, and spot clean soon after stains occur.

BACKING RECOMMENDATION

Knit backing is recommended for use on Holly Hunt upholstered product. For all other upholstery, please consult your workroom.



01 MORNING MIST



02 NATURAL



03 WHEAT



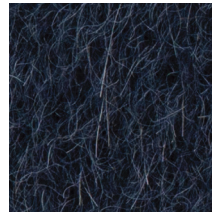
04 CLAY



05 TWIG



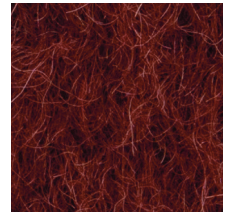
06 CLOUD



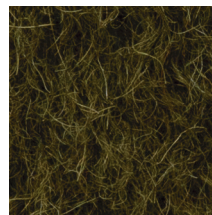
07 NEW BLUE



08 CHARCOAL



09 SUMAC



10 PALM

