

HOLLY HUNT GREAT OUTDOORS

FABRIC NUMBER AND NAME

139 / LAS PALMAS

DESCRIPTION

For clients that love Moksha and Vinyasa, LAS PALMAS is a fresh, new offering this season! Offered in four neutral colorways, this ribbed textile has a subtle striae and a two-tone effect across all four sku's. Designed with our HHO furniture in mind, this pattern pairs easily with the outdoor finishes, but would also be well-suited for application indoors.

CONTENT

100% Sunbrella® Acrylic

WIDTH

54" (137 cm)

REPEAT

10" Vertical 28" Horizontal
(25.5 cm Vertical 71 cm Horizontal)

FINISH

Stocked with a stain repellent finish

COLORS AVAILABLE

- 01 Shell
- 03 Gravel
- 04 Deep End

PERFORMANCE CHARACTERISTICS

- Fade-resistant to sunlight
- Chlorine resistant
- Colorfast
- Bleach cleanable
- Mold/mildew resistant
- For use indoors or out

TESTING INFORMATION

- Passes CAL 117
- Passes NFPA 260

WEIGHT

Upholstery

FREIGHT CODE

C

CLEANING & CARE

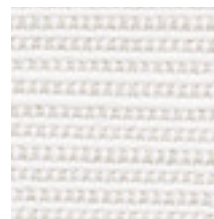
- Do not Dry Clean
- 100% Solution Dyed fibers are kidproof, dyed-through, easy to clean and don't fade!

(cleaning and care, continued...)

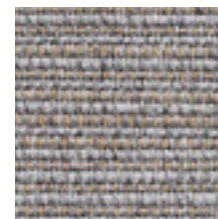


- Maintain fabrics by brushing off dirt before it becomes embedded, wipe up spills as soon as they occur or spot clean soon after stains occur.
- Spot clean only with a soft sponge or cloth. Do not use a brush as it may abrade the fibers. The delicate weave and fine denure of the yarns can break when cleaned with rough bristles.

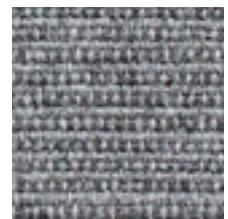
Extensive cleaning instructions available at www.hollyhunt.com.



01 SHELL



03 GRAVEL



04 DEEP END