

HOLLY HUNT GREAT OUTDOORS

FABRIC NUMBER AND NAME

315 / WIND DOWN

DESCRIPTION

Wind Down is a performance chenille with a lovely high-low texture. Whether it's indoors or out, furniture upholstered with this bleach-cleanable pattern is an invitation to relax.

CONTENT

100% Solution Dyed Acrylic

WIDTH

54" (137 cm)

COLORS AVAILABLE

- 01 Cloud
- 02 Undertow

PERFORMANCE CHARACTERISTICS

- Fade-resistant to sunlight
- Chlorine resistant
- Colorfast
- Bleach cleanable
- Mold/mildew resistant
- For use indoors or out

TESTING INFORMATION

- Passes 20,000 Wyzenbeek Double Rubs
- Passes CAL 117
- Passes NFPA 260

WEIGHT

Upholstery

FREIGHT CODE

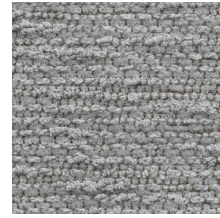
C

CLEANING & CARE

- 100% Solution Dyed fibers are kidproof, dyed-through, easy to clean and don't fade!
- Maintain fabrics by brushing off dirt before it becomes embedded, wipe up spills as soon as they occur or spot clean soon after stains occur.
- Spot clean only with a soft sponge or cloth. Do not use a brush as it may abrade the fibers. The delicate weave and the yarns can break when cleaned with rough bristles.



01 CLOUD



02 UNDERTOW

