

HOLLY HUNT LEATHER

FABRIC NUMBER AND NAME

7200 / PRECIOUS METAL

DESCRIPTION

A metallic leather offered in classic metal colorways: gold, rose gold, bronze and platinum. Offered in half hides, Precious Metal is perfect for small-scale upholstery—like dining chairs or benches—for an intriguing accent.

CONTENT

Half hide

AVERAGE HIDE SIZE

21 sq ft (2.0 sq m)

AVERAGE LARGEST CUT SIZE

45" Vertical 24" Horizontal
(114 cm Vertical 61 cm Horizontal)

THICKNESS

1.4 – 1.6 mm

FINISH

- Embossed grain
- Metallic finish

COLORS AVAILABLE

- 01 Bronze
- 02 Gold
- 03 Rose Gold
- 04 Gunmetal

TESTING INFORMATION

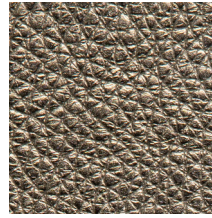
- Passes CAL 117
- Passes NFPA 260
- Passes BS 5852 Source 0 & 1 with FR rated foam

FREIGHT CODE

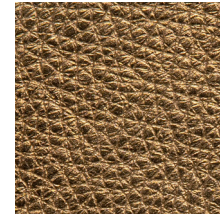
L

CLEANING & CARE

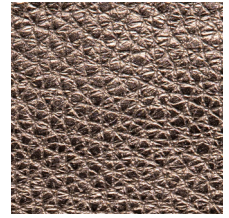
- The surface of this leather is protected with a polyurethane top coat that will repel most common stains when blotted immediately.
- Clean spots with a slightly damp cloth and rub gently in circular motions only, so that the leather does not get damaged.
- When spot cleaning, always test a small, inconspicuous part of the furniture in case of discoloration.



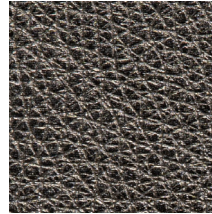
01 BRONZE



02 GOLD



02 ROSE GOLD



04 GUNMETAL

