

# HOLLY HUNT GREAT PLAINS

## FABRIC NUMBER AND NAME

1120 / GALA

## DESCRIPTION

Gala has a beautiful organic textured stingray pattern, iconic to the HH textile and leather collection. Each color is stocked with a stain repellent finish and can be produced in a contract quality upon request. Great for a wide variety of uses, specifically bedding and tight upholstery.

## CONTENT

73% Cotton 27% Polyamide

## WIDTH

55" (140 cm)

## REPEAT

23-3/5" Vertical 14-1/5" Horizontal  
(60 cm Vertical 36 cm Horizontal)

## FINISH

- Stocked with a stain repellent finish
- The stain repellent finish is 100% non-toxic and is not harmful to the user or the environment

## COLORS AVAILABLE

- 02 Honey
- 03 Celadon
- 04 Moonstone
- 06 Pearl White
- 07 Rose Quartz
- 08 Silvered
- 09 Foggy

## TESTING INFORMATION

- Passes 50,000 Wyzenbeek Double Rubs  
Suitable for residential and contract use
- Passes CAL 117 (2013)
- Passes NFPA 260
- Passes BS 5852 Source 0 with FR rated foam

## WEIGHT

Upholstery

## FREIGHT CODE

C

## CLEANING & CARE

- Professional dry cleaning with any solvent except trichloroethylene is recommended.
- For optimal textile performance, maintain fabrics by gently vacuuming dirt before it becomes embedded, wipe or blot spills as soon as they occur, and spot clean soon after stains occur. When spot cleaning, always test a small, inconspicuous part of the furniture in case of discoloration or shrinkage. Avoid excessive brushing that may abrade the fibers.

## BACKING RECOMMENDATION

- Knit backing is recommended for use on HOLLY HUNT upholstered product. For all other upholstery, please consult your workroom.



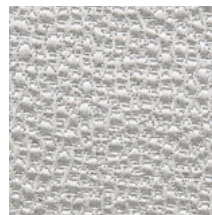
06 PEARL WHITE



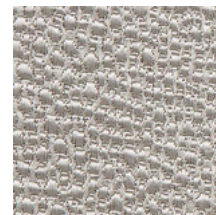
07 ROSE QUARTZ



02 HONEY



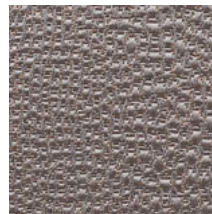
08 SILVERED



09 FOGGY



03 CELADON



04 MOONSTONE

