

HOLLY HUNT GREAT PLAINS

FABRIC NUMBER AND NAME

4105 / GLASGOW

DESCRIPTION

This wool weave has a subtle grid-like pattern for a modern look. Use Glasgow when a hint of texture is all you need to complete the perfect upholstery piece.

CONTENT

100% Wool

WIDTH

55" (139.5 cm)

COLORS AVAILABLE

- 01 Vanilla
- 02 Limestone
- 03 Iceland
- 04 Serenity

TESTING INFORMATION

- Passes 35,000 Wyzenbeek Double Rubs
- Passes CAL 117
- Passes NFPA 260

WEIGHT

Upholstery

FREIGHT CODE

C

CLEANING & CARE

- Dry clean
- For optimal textile performance, maintain fabrics by gently cleaning the surface regularly with a soft cloth, wipe or blot spills as soon as they occur, and spot clean soon after stains occur.

BACKING RECOMMENDATION

Knit backing is recommended for use on HOLLY HUNT upholstered product. For all other upholstery, please consult your workroom.



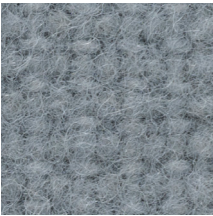
01 VANILLA



02 LIMESTONE



03 ICELAND



04 SERENITY

