

HOLLY HUNT GREAT PLAINS

FABRIC NUMBER AND NAME

1553 / CLOUD NINE

DESCRIPTION

Cloud Nine is a core velvet to the Great Plains collection with great performance features such as passing 75,000 Wyzenbeek double rubs and US flammability testing. This pattern is offered in a wide array of neutrals as well as saturated blues and purple hues making it easy to coordinate with other Great Plains fabrics. This fabric is easy to care for, as water soluble and solvent-based stains can easily be cleaned!

CONTENT

Pile: 100% Polyacrylic
Ground: 100% Polyester

WIDTH

57" (145 cm)

COLORS AVAILABLE

- 01 Fresh Powder
- 02 Perfection
- 03 Sanded
- 04 Grey Mist
- 05 Lilac
- 06 Blue Steel
- 07 Terra
- 08 Graphite
- 09 Espresso
- 10 Atlantic
- 11 Jaded
- 12 Deep Sea
- 13 Marina
- 14 Ox Blood
- 15 Rosé
- 16 Amber
- 17 Cognac
- 18 Palm
- 19 Soft Light
- 20 Khaki
- 21 Gold
- 22 Dusk
- 23 Sedona
- 24 Acai
- 25 Mulberry
- 26 Mint
- 27 Sky
- 28 Turq
- 29 Chocolate

TESTING INFORMATION

- Passes CAL 117
 - Passes NFPA 260
 - Passes 75,000 Wyzenbeek Double Rubs
- Recommended for medium to heavy duty residential and contract use

WEIGHT

Upholstery

FREIGHT CODE

D

[additional information on page 2...]



01 FRESH POWDER

19 SOFT LIGHT

03 SANDED



02 PERFECTION

04 GREY MIST

07 TERRA



20 KHAKE

21 GOLD

29 CHOCOLATE



05 LILAC

08 GRAPHITE

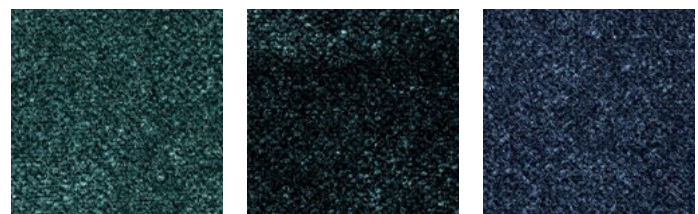
09 ESPRESSO



06 BLUE STEEL

27 SKY

28 TURQ



11 JADED

12 DEEP SEA

10 ATLANTIC



HOLLY HUNT GREAT PLAINS

CLEANING & CARE

MAINTENANCE

- For optimal textile performance, maintain fabrics by gently vacuuming dirt before it becomes embedded, wipe or blot spills as soon as they occur, and spot clean soon after stains occur. When spot cleaning, always test a small, inconspicuous part of the furniture in case of discoloration or shrinkage. Avoid excessive brushing that may abrade the fibers.

WATER-SOLUBLE STAINS

SUCH AS WINE, KETCHUP, COFFEE, MILK, ORANGE JUICE, OR CHOCOLATE

- Act soon after stain occurs. Be sure to remove any excess substance with a spoon or absorbent cloth or sponge before treating. Do not pour cleaning products directly onto material.
- Spot clean using warm water and detergent. Always use a clean white cloth or sponge and rinse in clean water between wiping. After cleaning, allow the fabric to air dry overnight.
- For dried stains, soak prior to cleaning.
- A cleaning vacuum is recommended for other stains using water and detergent.

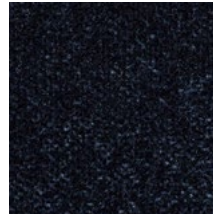
STAINS NOT SOLUBLE IN WATER

FOR SOLVENT-BASED STAINS SUCH AS PEN, LIPSTICK, NAIL POLISH

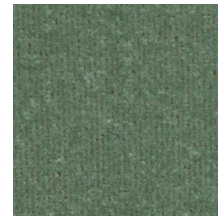
- Using a clean white cloth or sponge, surround the stain with acetone. Continue to spot clean using acetone and rinse in clean water between wiping.
- After cleaning, allow the fabric to air dry overnight.

DISCOLORATION FROM CLOTHING

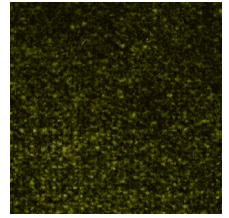
- Spot clean using a mixture of water, detergent and bleach. Allow to soak for 20 minutes. Always use a clean white cloth or sponge and rinse in clean water between wiping.
- For dried stains, soak prior to cleaning. After cleaning, allow the fabric to air dry overnight.
- A cleaning vacuum is also recommended using water and detergent.



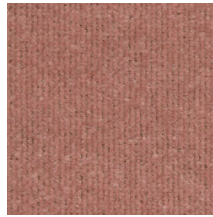
13 MARINA



26 MINT



18 PALM



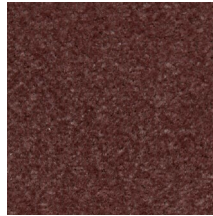
23 SEDONA



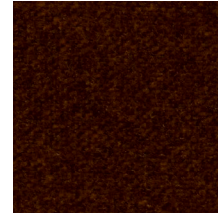
16 AMBER



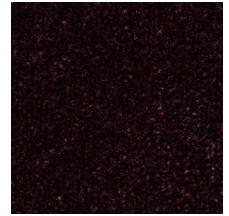
15 ROSÉ



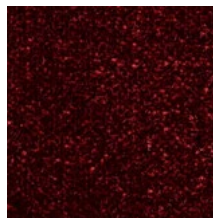
24 ACAI



17 COGNAC



25 MULBERRY



14 OX BLOOD



22 DUSK