

Charmer/W1056

Description: Print on  
Non-Woven Backing

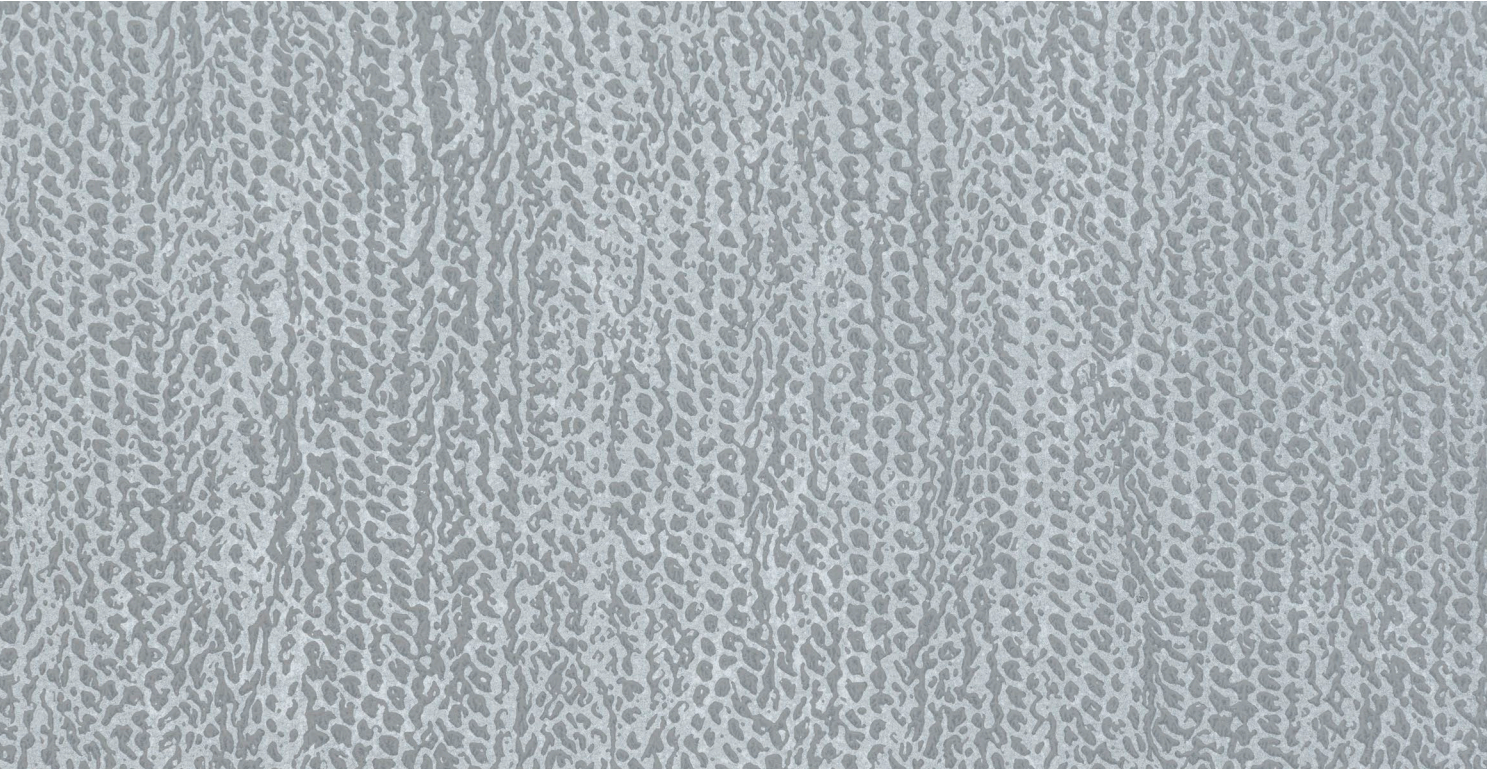
Dimensions: 27" w x 9 yd  
(68.6 cm x 8.2 m)

Edges: Pretrimmed

Repeat: 20.5" V x 27" H  
(52.1 cm V x 68.6 cm H)

Flame Testing: ASTM-E84 Class A

HOLLY HUNT  
Walls



W1056/09 LAKE



FEATURED W1056/07 STERLING AND BRIMSTONE CONSOLE

Charmer/W1056



W1056/01 PEARL



W1056/02 ORCHID



W1056/03 PEBBLE



W1056/04 SAND



W1056/05 DOVE



W1056/06 PEWTER



W1056/07 STERLING



W1056/08 GLACIER



W1056/09 LAKE

SAMPLES AVAILABLE AT YOUR SHOWROOM AND [WWW.HOLLYHUNT.COM](http://WWW.HOLLYHUNT.COM) T 800 320 3145  
ALL DESIGNS ARE PROTECTED BY COPYRIGHT AND THE TRADEMARK LAWS OF THE U.S. HOLLY HUNT ENTERPRISES, INC.®

Pattern Maker Collection