



CARLISLE & CO.
WALLCOVERINGS
— EST. 1998 —



NATURALS
EVERGLADE

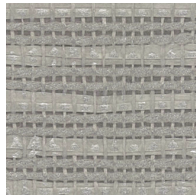
LX1645 PORCELAIN

| | |
|----------------|-----------------------|
| WIDTH: | 36" (91,4 cm) Trimmed |
| REPEAT: | None |
| BACKING: | Non-Woven |
| FLAME RATING: | ASTM E84 Class A |
| BOLT SIZE: | 8 yd (7,32 m) |
| MATCH: | Random |
| MINIMUM ORDER: | 8 yd (7,32 m) |
| MAINTENANCE: | Soft Dry Brush |

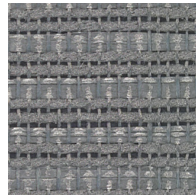
MORE COLORS



LX1645
Porcelain



LX1646
Heather



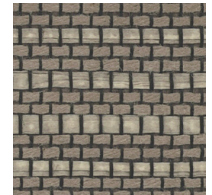
LX1647
Stone



LX1648
Soft Silver



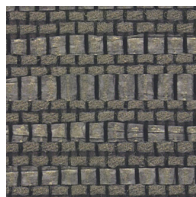
LX1649
Taupe



LX1650
Driftwood



LX1651
Steel Blue



LX1652
Anchor

TO THE TRADE

US MARKETS

Exclusively through Holly Hunt

hollyhunt.com

INTERNATIONAL MARKETS

800.220.6730

carlisleco.com