

HOLLY HUNT GREAT PLAINS

FABRIC NUMBER AND NAME

3027 / LINEN CORD

DESCRIPTION

Woven with a refined vertical rib, Linen Cord is a double-wide drapery with style. This 100% linen textile has a soft hand, and just enough heft to drape beautifully. We love the casual look when paired with Linen Pinstripe or Linen Ticking to create a beautiful, coordinated combination.

CONTENT

100% Linen

WIDTH

118" (300 cm)

FINISH

Double Width

COLORS AVAILABLE

- 01 Bleached
- 02 Mist
- 03 Natural

WEIGHT

Double Width

FREIGHT CODE

DW

CLEANING & CARE

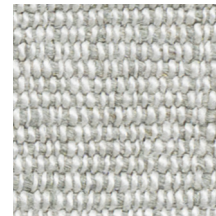
- For optimal textile performance, maintain fabrics by gently vacuuming dirt before it becomes embedded, blot spills as soon as they occur, and spot clean soon after stains occur. When spot cleaning, always test a small, inconspicuous part of the furniture in case of furniture discoloration or shrinkage. Avoid excessive brushing that may abrade the fibers.

BACKING RECOMMENDATION

Knit backing is recommended for use on HOLLY HUNT upholstered product. For all other upholstery, please consult your workroom.



01 BLEACHED



02 MIST



03 NATURAL

