

HOLLY HUNT GREAT PLAINS

FABRIC NUMBER AND NAME

1969 / TEDDY

DESCRIPTION

Modern and cozy, Teddy evokes the runway look of lambswool or curly lamb. The blend of alpaca and wool ensures a soft hand and durability, while its bouclé yarn creates a dense and luxurious look. This wonderfully versatile textile is pre-backed, non-directional, and has a high double rub count.

CONTENT

Pile: 45% Alpaca 25% Wool 14% Cotton
9% Polyester 7% Nylon
Ground: 100% Linen

WIDTH

55" (140cm)

COLORS AVAILABLE

- 01 Winter White
- 02 Buff
- 03 Warm Silver
- 04 True Navy
- 05 Graphite
- 06 Charcoal
- 07 Burnt Orange
- 08 Morganite
- 09 Mulberry
- 10 Mint
- 11 Deep Emerald

TESTING INFORMATION

- Passes 55,000 Wyzenbeek Double Rubs
- Passes CAL 117
- Passes NFPA 260
- Passes BS 5852 Source 0 & 1 with FR rated foam

WEIGHT

Upholstery

FREIGHT CODE

C

CLEANING & CARE

- Professional dry cleaning recommended.
- For optimal textile performance, maintain fabrics by gently vacuuming dirt before it becomes embedded, wipe or blot spills as soon as they occur, and spot clean soon after stains occur. When spot cleaning, always test a small, inconspicuous part of the furniture in case of furniture discoloration or shrinkage. Avoid excessive brushing that may abrade the fibers.

BACKING RECOMMENDATION

Pre-backed



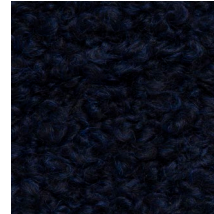
01 WINTER WHITE



02 BUFF



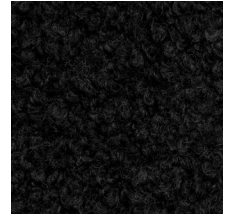
03 WARM SILVER



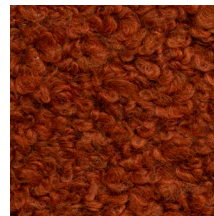
04 TRUE NAVY



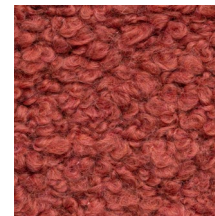
05 GRAPHITE



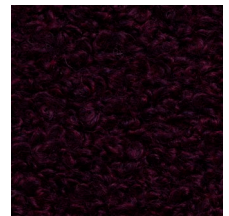
06 CHARCOAL



07 BURNT ORANGE



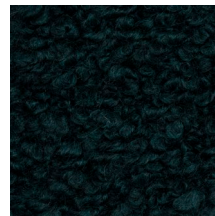
08 MORGANITE



09 MULBERRY



10 MINT



11 DEEP EMERALD

