

HOLLY HUNT GREAT OUTDOORS

FABRIC NUMBER AND NAME

160 / SWITCHBACK

DESCRIPTION

Switchback is an outdoor jacquard velvet and the first of its kind in our outdoor-suitable assortment. Featuring an abstract all-over pattern, this velvet has a one-of-a-kind high-low effect which gives dimension and luxury to any space. Each colorway features a multi-tonal look, making it easy to scheme with coordinating textiles.

CONTENT

71% Solution Dyed Acrylic 29% Polyester

WIDTH

50" (127 cm)

REPEAT

25" Vertical 25" Horizontal
(63.5 cm Vertical 63.6 cm Horizontal)

COLORS AVAILABLE

- 01 Warm & Cool
- 02 Hot Chili
- 03 Royal

TESTING INFORMATION

- Passes 60,000 Wyzenbeek Double Rubs
- Passes Cal 117
- Passes NFPA 260

WEIGHT

Upholstery

FREIGHT CODE

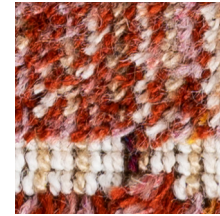
C

CLEANING & CARE

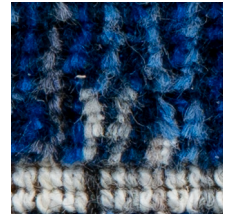
- 100% Solution Dyed fibers are kidproof, dyed-through, easy to clean and don't fade!
- Maintain fabrics by brushing off dirt before it becomes embedded, wipe up spills as soon as they occur or spot clean soon after stains occur.
- Spot clean only with a soft sponge or cloth. Do not use a brush as it may abrade the fibers. The delicate weave and the yarns can break when cleaned with rough bristles.



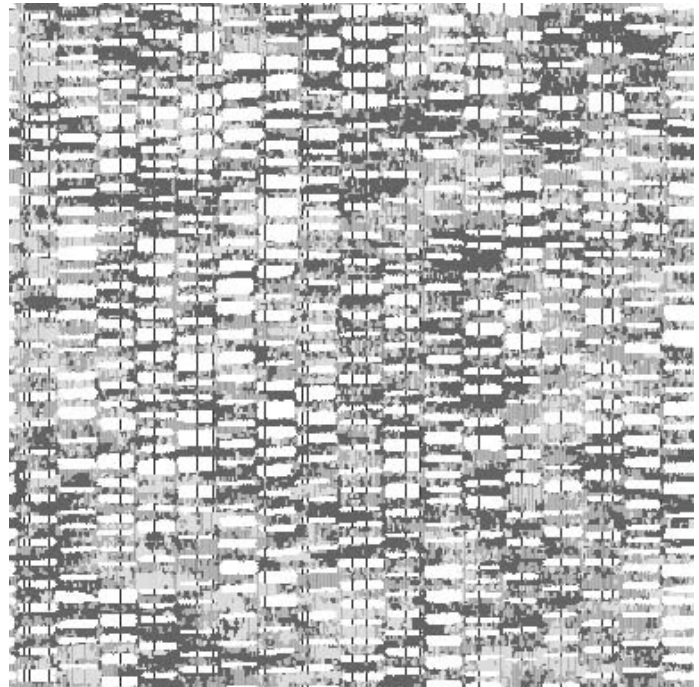
01 WARM & COOL



02 HOT CHILI



03 ROYAL



FULL REPEAT

