

# HOLLY HUNT GREAT PLAINS

## FABRIC NUMBER AND NAME

4612 / GEODE

## DESCRIPTION

Geode is a high-performance all-over embroidery, featuring a dense chenille as the ground. The pattern is embroidered using only one colored thread, but as the light catches the stitching, a multi-tonal effect is created.

## CONTENT

Base: 53% Viscose 47% Cotton

Embroidery: 89% Viscose 11% Polyester

## WIDTH

52" (132 cm)

## REPEAT

9-1/4" Vertical 8-1/2" Horizontal

(23-1/2 cm Vertical 21-1/2 cm Horizontal)

## COLORS AVAILABLE

- 01 Latte
- 02 Golden Grey
- 03 Nightfall
- 04 Marina
- 05 Burnt Orange

## TESTING INFORMATION

- Passes 100,000 Wyzenbeek Double Rubs
- Passes BS 5852 Source 0 & 1 With FR Rated Foam

## WEIGHT

Multi-Use

## FREIGHT CODE

C

## CLEANING & CARE

- Dry cleaning only.
- For optimal textile performance, maintain fabrics by gently vacuuming dirt before it becomes embedded, blot spills as soon as they occur, and spot clean soon after stains occur. When spot cleaning, always test a small, inconspicuous part of the furniture in case of furniture discoloration or shrinkage. Avoid excessive brushing that may abrade the fibers.

## BACKING RECOMMENDATION

Knit backing is recommended for use on HOLLY HUNT upholstered product. For all other upholstery, please consult your workroom.



01 LATTE



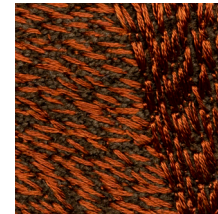
02 GOLDEN GREY



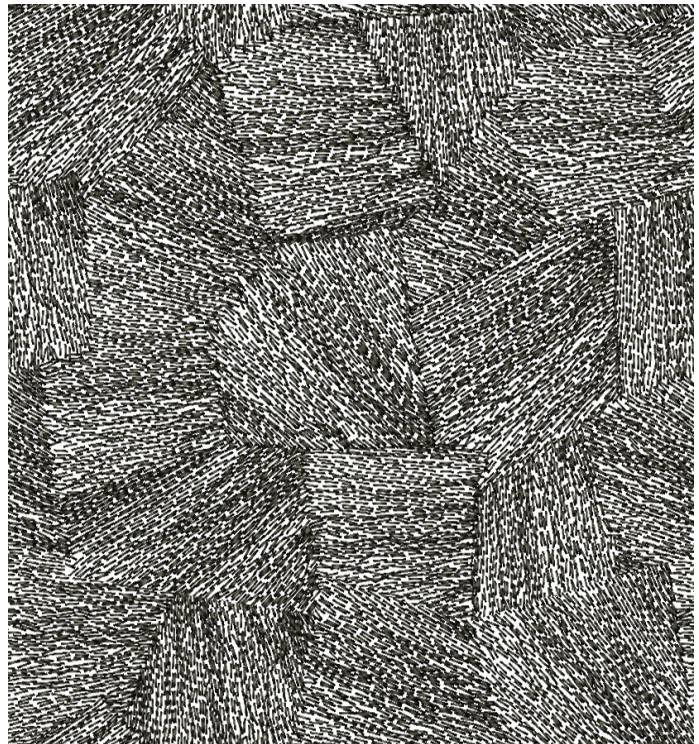
03 NIGHTFALL



04 MARINA



05 BURNT ORANGE



FULL REPEAT

