

HOLLY HUNT GREAT PLAINS

FABRIC NUMBER AND NAME

1281 / PLUSHY

DESCRIPTION

True to the name, Plushy is just that! Full of soft texture, you'll want to cuddle into this luxe fabric. Plushy receives over 100K Wyzenbeek double rubs, while also passing fire codes, making it a great textile option for both contract and residential upholstery. We love its mottled look of lived-in luxury.

CONTENT

90% Polyester 10% Cotton

WIDTH

55" (140 cm)

COLORS AVAILABLE

- 01 Marble
- 02 Going Grey
- 03 Putty
- 04 Silver Steel
- 05 Ink
- 06 Soft Light
- 07 Warm Silver
- 08 Indian Summer

TESTING INFORMATION

- Passes 100,000 Wyzenbeek Double Rubs
- Passes CAL 117
- Passes NFPA 260

WEIGHT

Upholstery

FREIGHT CODE

C

CLEANING & CARE

For optimal textile performance, maintain fabrics by gently vacuuming dirt before it becomes embedded, wipe or blot spills as soon as they occur, and spot clean soon after stains occur. When spot cleaning, always test a small, inconspicuous part of the furniture in case of furniture discoloration or shrinkage. Avoid excessive brushing that may abrade the fibers.

BACKING RECOMMENDATION

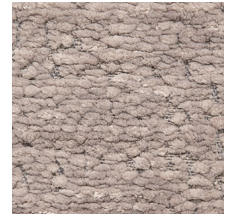
Knit backing is recommended for use on HOLLY HUNT upholstered product. For all other upholstery, please consult your workroom.



06 SOFT LIGHT



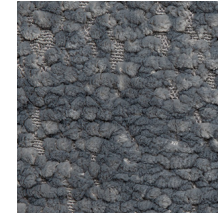
01 MARBLE



02 GOING GREY



03 PUTTY



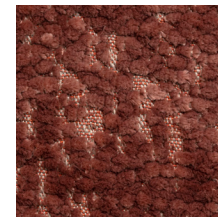
04 SILVER STEEL



05 INK



07 WARM SILVER



08 INDIAN SUMMER

