

# HOLLY HUNT GREAT OUTDOORS

## FABRIC NUMBER AND NAME

325 / JOURNEY

## DESCRIPTION

Woven at one of the best linen mills in Belgium, you won't believe this isn't linen! Inspired by the colors of the tropical flora and fauna of Bali, we are pleased to expand our small-scale geometric patterns within Great Outdoors with JOURNEY.

## CONTENT

100% Polypropylene

## WIDTH

59" (150 cm)

## REPEAT

5 1/2" Vertical 5" Horizontal  
(14 cm Vertical 13 cm Horizontal)

## COLORS AVAILABLE

- 01 White Sand
- 02 Silverfish
- 03 Clover
- 04 Apricot

## PERFORMANCE CHARACTERISTICS

- Fade-resistant to sunlight
- Chlorine resistant
- Colorfast
- Bleach cleanable
- Mold/mildew resistant
- For use indoors or out

## TESTING INFORMATION

- Passes 30,000 Wyzenbeek Double Rubs
- Passes CAL 117
- Passes NFPA 260

## WEIGHT

Upholstery

## FREIGHT CODE

C

## CLEANING & CARE

- Do not Dry Clean
- HOLLY HUNT Outdoor fabrics are kidproof, dyed-through, easy to clean and don't fade!
- Maintain fabrics by brushing off dirt before it becomes embedded, wipe up spills as soon as they occur or spot clean soon after stains occur.

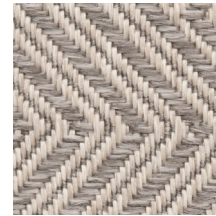
*(Cleaning and care, continued...)*

- Spot clean only with a soft sponge or cloth. Do not use a brush as it may abrade the fibers. The delicate weave and fine denure of the yarns can break when cleaned with rough bristles.

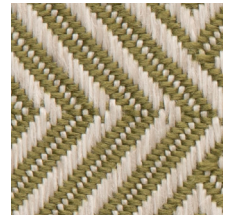
Extensive cleaning instructions available at [www.hollyhunt.com](http://www.hollyhunt.com).



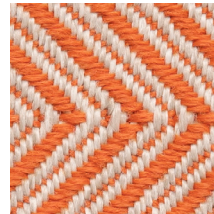
01 WHITE SAND



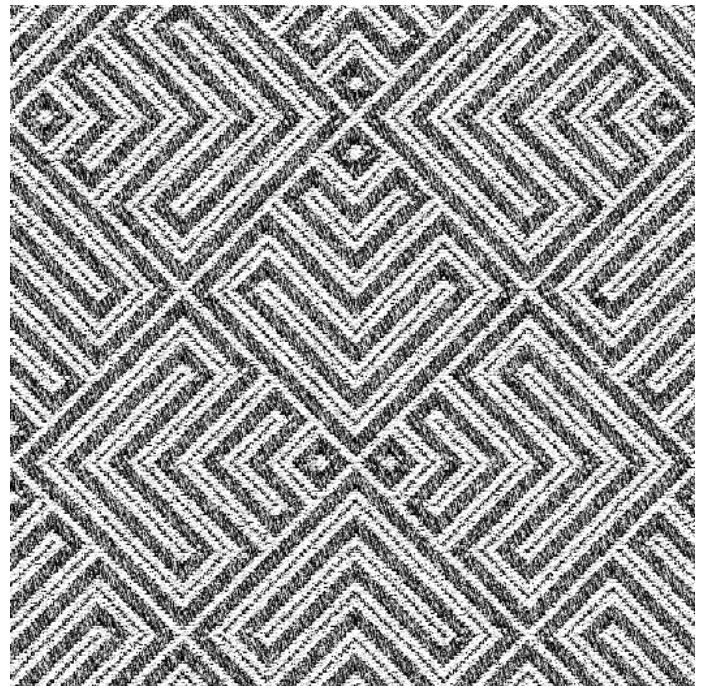
02 SILVERFISH



03 CLOVER



04 APRICOT



REPEAT

